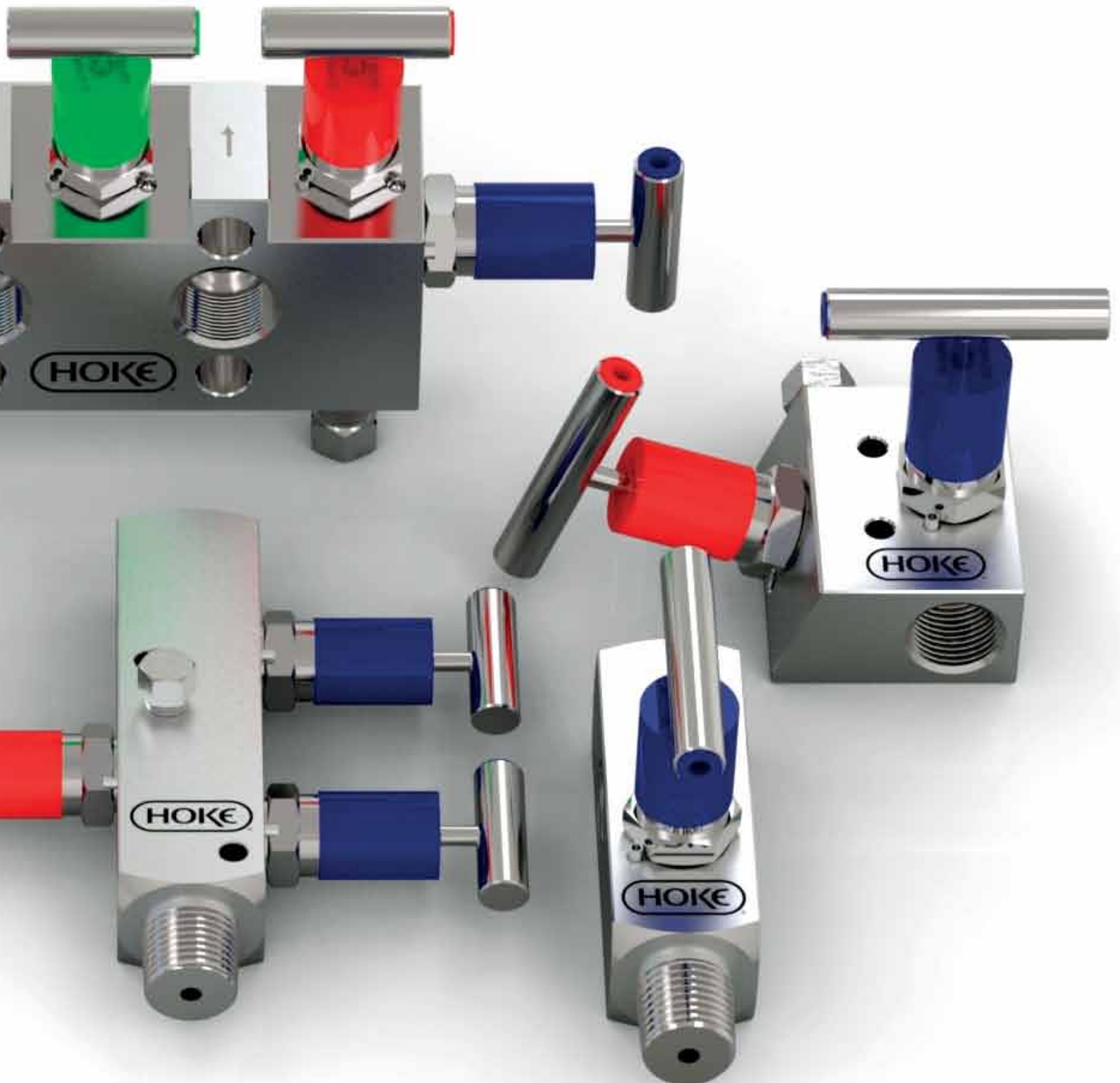


Hand Valves, Gauge Valves & Manifolds





Index

Technical Specifications Pg.2

NPT High Tolerance Thread Specifications..... Pg.3

Integral GYROLOK® Pg.4

How To Order / Optional Extras Pg.6,10,21

Hand Valves..... Pg.5

Gauge Valves Pg.7

Manifolds Pg.11

Mounting Bracket Kits Pg.22

Guidance On Use Pg.25

WARNING – For Your Safety—USER RESPONSIBILITY

FAILURE OR IMPROPER SELECTION OR IMPROPER USE OF THE PRODUCTS DESCRIBED HEREIN OR RELATED ITEMS CAN CAUSE DEATH, PERSONAL INJURY AND PROPERTY DAMAGE.

This document and other information from CIRCOR Instrumentation Technologies (CIT), its subsidiaries and authorized distributors provide product or system options for further investigation by users having technical expertise. IT IS SOLELY THE RESPONSIBILITY OF THE SYSTEM DESIGNER AND USER TO SELECT PRODUCTS SUITABLE FOR THEIR SPECIFIC APPLICATION REQUIREMENTS AND TO ENSURE PROPER INSTALLATION, OPERATION AND MAINTENANCE OF THESE PRODUCTS, MATERIAL COMPATABILITY, PRODUCT RATINGS AND APPLICATION DETAILS SHOULD BE CONSIDERED IN THE SELECTION.

The user through its own analysis and testing, is solely responsible for making the final selection of the system and components and assuring that all performance, endurance, maintenance, safety and warning requirements of the application are met. The user must analyze all aspects of the application; follow applicable industry standards; and follow the information concerning the product in the current product catalog an in any other materials provided by CIT or authorized distributors.

To the extent that CIT or its subsidiaries or authorized distributors provide component or system options based upon data or specifications provided by the user, the user is responsible for determining that such data and specifications are suitable and sufficient for all applications and reasonably foreseeable uses of the components or systems.

(Please refer to our **Guidance on Use of Equipment** document).

Offer of Sale

The items described in this document are hereby offered for sale by CIRCOR Instrumentation Technologies (CIT), its subsidiaries or its distributors. Any order accepted by CIT will be subject to our terms and conditions of sale, copy available on www.hoke.com, or by request.



HOKE, Inc
PO Box 4866
Spartanburg, SC 29305-4866
Phone: (864) 574-7966
Fax: (864) 587-5608

www.hoke.com
sales-hoke@circor.com



Hand Valves, Gauge Valves and Manifolds at a Glance

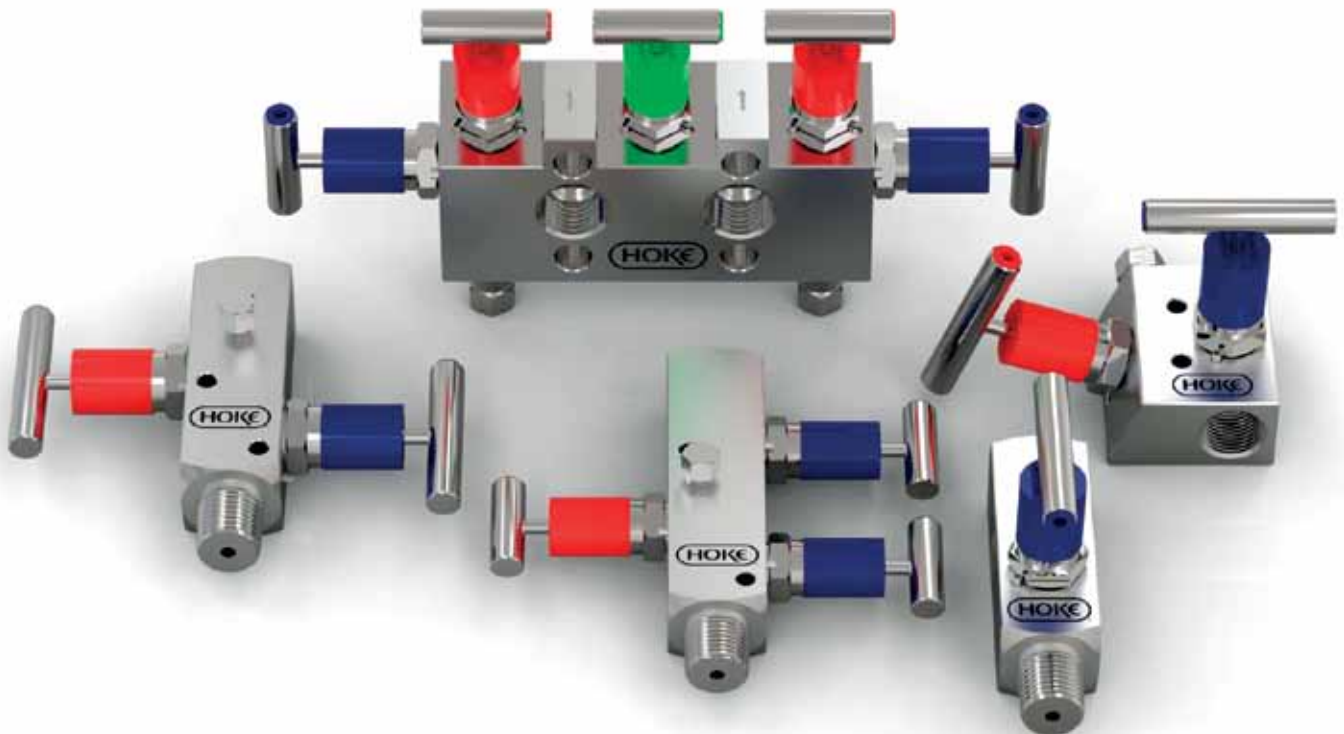
HOKE® offers a variety of precision engineered valves and 2, 3, and 5-valve Hand Valves, Gauge Valves & Manifolds in Direct and Remote Mount styles with vent configurations to meet most flow, pressure and level measurement application requirements. HOKE® 2-valve manifolds are designed for static pressure and liquid level applications; the 3 and 5 valve manifolds are well suited for use with most differential pressure transmitters and can accept both female and flange process impulse line connections.

HOKE® Hand Valves, Gauge Valves & Manifolds have been designed to provide the safest possible connection and mounting of instruments. Standard features include:

- Full 316/316L Dual Certified stainless steel components.
- Full compliance of NACE MR-01-75 specifications.
- Laser engraved identification.
- HOKE® Close tolerance NPT threads to ensure maximum engagement with mating threaded components. (Page.3)
- Available with option of integral GYROLOK® tube fitting connections.
- Choice of exotic alloys i.e., MONEL®, Duplex, Super Duplex, Titanium, HASTELLOY®, Alloys 625, 825, 6Mo.
- All special materials sourced from NORSOK M-650 approved mills.
- Optional mounting bracket kits available.

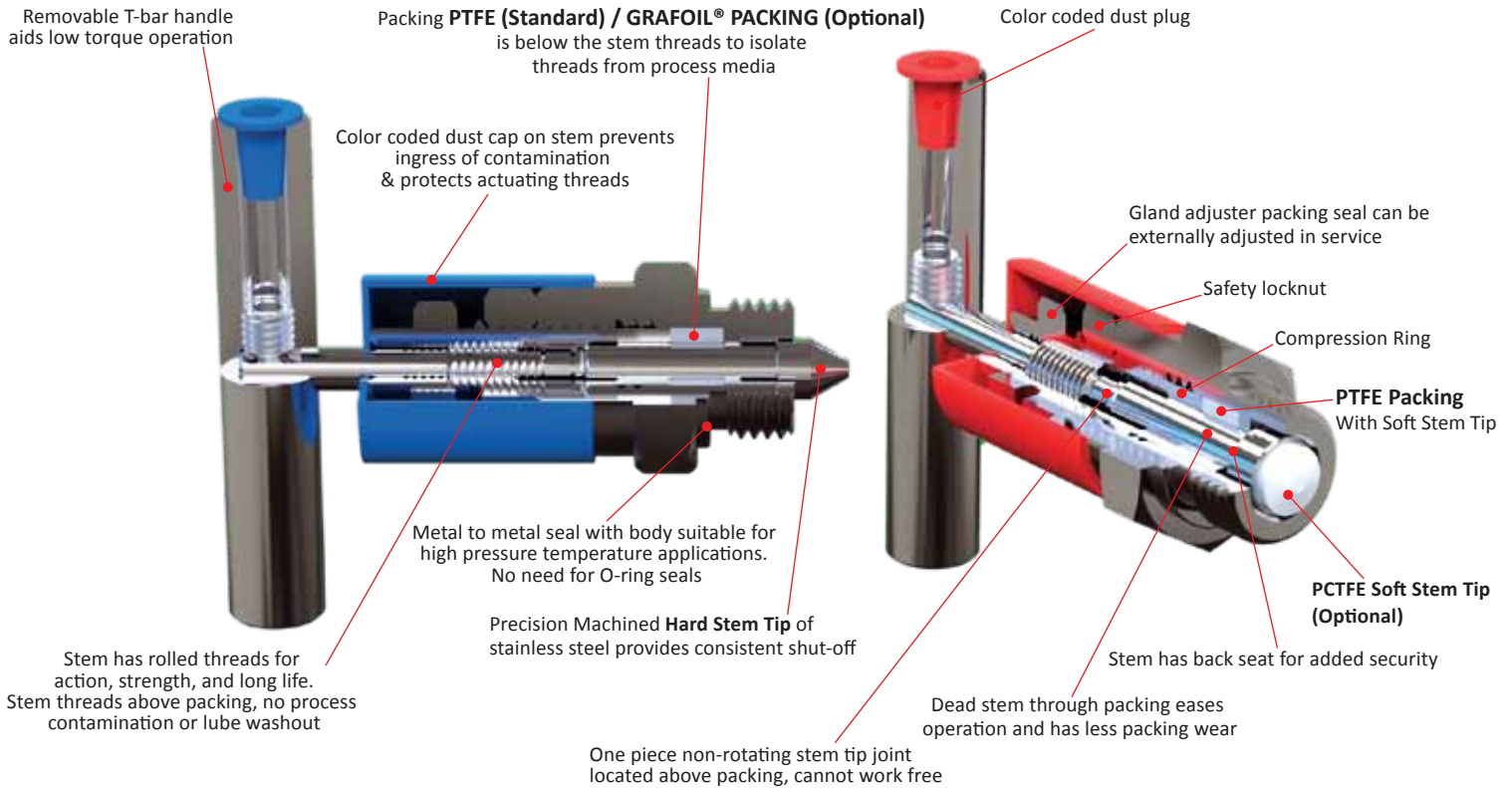
Pressure Equipment Directive.

Due to internal bore size and internal volumes up to and including 1"-inch/25mm, products offered in this catalogue comply with S.E.P (Sound Engineering Practice) article 3, paragraph 3 of the Pressure Equipment Directive P.E.D. 97/23/EC and therefore CE marking is not applicable.



STANDARD VALVE HEAD ASSEMBLY

Technical Specifications



Note: PCTFE Soft Stem Tip (Option) is only available with PTFE Packing

PRESSURE TEMPERATURE CHART

PTFE PACKING

Maximum pressure 6000 psi (413 bar) at 212° F (100° C)

Maximum pressure 4000 psi (275 bar) at 392° F (200° C)

(PTFE packing rated to maximum temperature of 392° F (200° C))

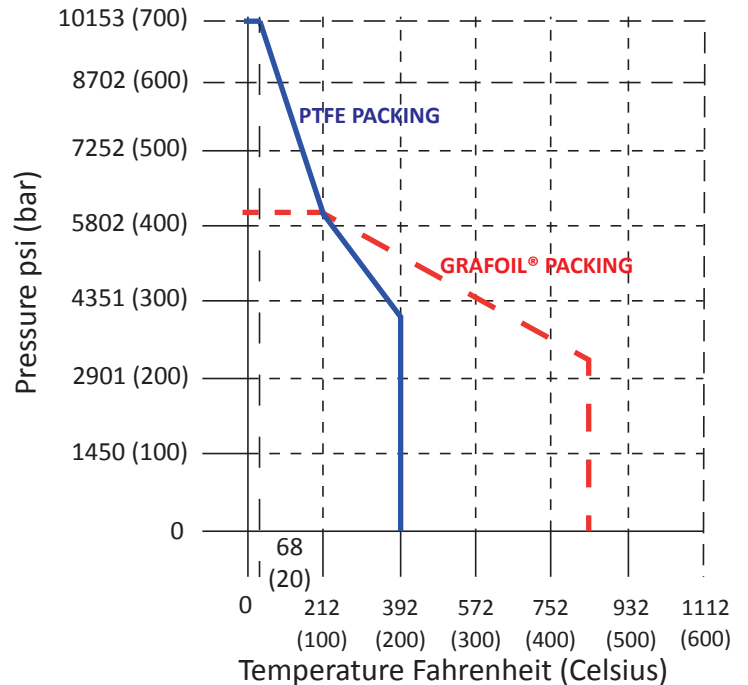
GRAFOIL® PACKING

Maximum pressure 6000 psi (413 bar) at 212° F (100° C)

Maximum pressure 3300 psi (230 bar) at 842° F (450° C)

OTHER FEATURES

- Valves are supplied to NACE MR-01-75 specification.
- Needle valve & and block and bleed valve available in right angled form.
- Hydrostatically tested to 1.5 times maximum working pressure.
- Wide variety of process connections available by arrangement.
- Bleed & blind plugs are available.
- Isolating trim as standard, metering trim available on request.
- Panel mounting valve available on request.
- PCTFE Soft tip option available for special application (Max working temperature = 120° C).
- All valves and manifolds are individually boxed for protection and storage.
- Laser engraved identification.
- Valves have trace code on body with original mill certificates available all to EN 10204-3.1.
- All special materials sourced from NORSOK M-650 approved mills.
- Ø 4.76 Standard thru bore (CV = 0.4) Fully open.
- Bonnet locking pin safely locks the bonnet to body.





HOKE® High Tolerance NPT Thread

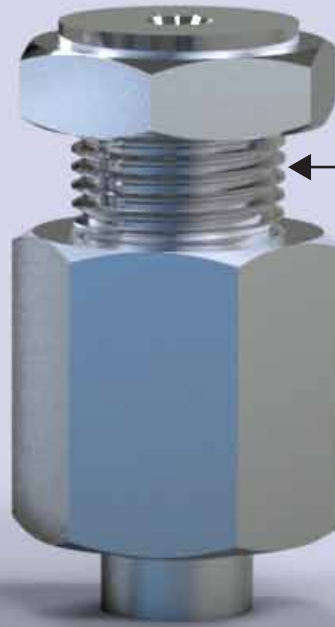
Note: Graphic is an illustration only

NPT Engagement using High Tolerance **HOKE**® NPT Connections has 5-6 threads engaged when fully tightened.



HOKE® High Tolerance NPT Thread

NPT Engagement using ANSI/ASME B1.20.1 Pipe Thread Standard has only 3-4 threads engaged when fully tightened.



Standard B1.20.1 NPT Thread



HOKE, Inc
PO Box 4866
Spartanburg, SC 29305-4866
Phone: (864) 574-7966
Fax: (864) 587-5608

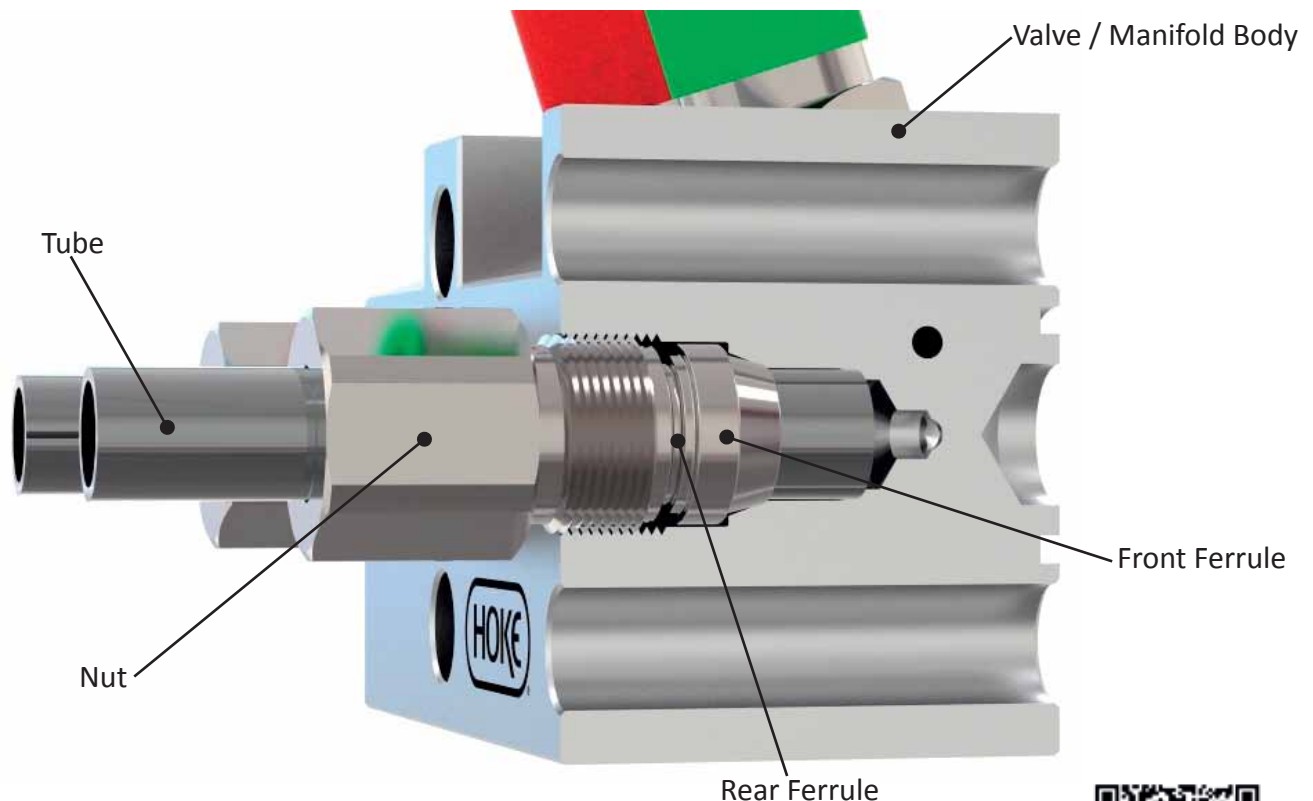


HOKE® Integral GYROLOK® Tube Fitting Connection

Note: Graphic is an illustration only – please consult HOKE® for details

The HOKE® range of hand valves, gauge valves and manifolds are available with the option of the integral GYROLOK® tube fitting connections. The integral GYROLOK® tube fitting connection is machined directly into the body of the valve or manifold, allowing tubing to be directly connected without the use of traditional threaded (NPT, BSP) connections. The integral GYROLOK® connection provides a safer connection system for high pressure, severe, steam or sour gas service where leakage has dangerous consequences.

- Eliminates traditional threaded tubing connections
- Provides a safer and more consistent tube connection
- Saves assembly time during field assembly
- Reduces potential leak paths
- No need for sealing tape or liquid sealing compounds
- Fully field maintainable
- Successfully used for over 20 years in many offshore applications
- Available in 10mm metric tube connections
- Available in 3/8" inch & 1/2" inch imperial tube connections



HOKE, Inc
PO Box 4866
Spartanburg, SC 29305-4866
Phone: (864) 574-7966
Fax: (864) 587-5608

www.hoke.com
sales-hoke@circor.com

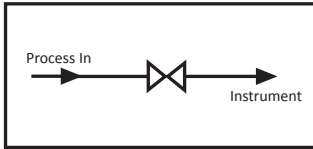


SINGLE BLOCK HAND VALVE

MODEL-HM25

HOKE Hand Valves, Gauge Valves & Manifolds

ISOLATE Blue
VENT Red
EQUALIZE Green



Weight=1.1 lbs(0.5 kg)

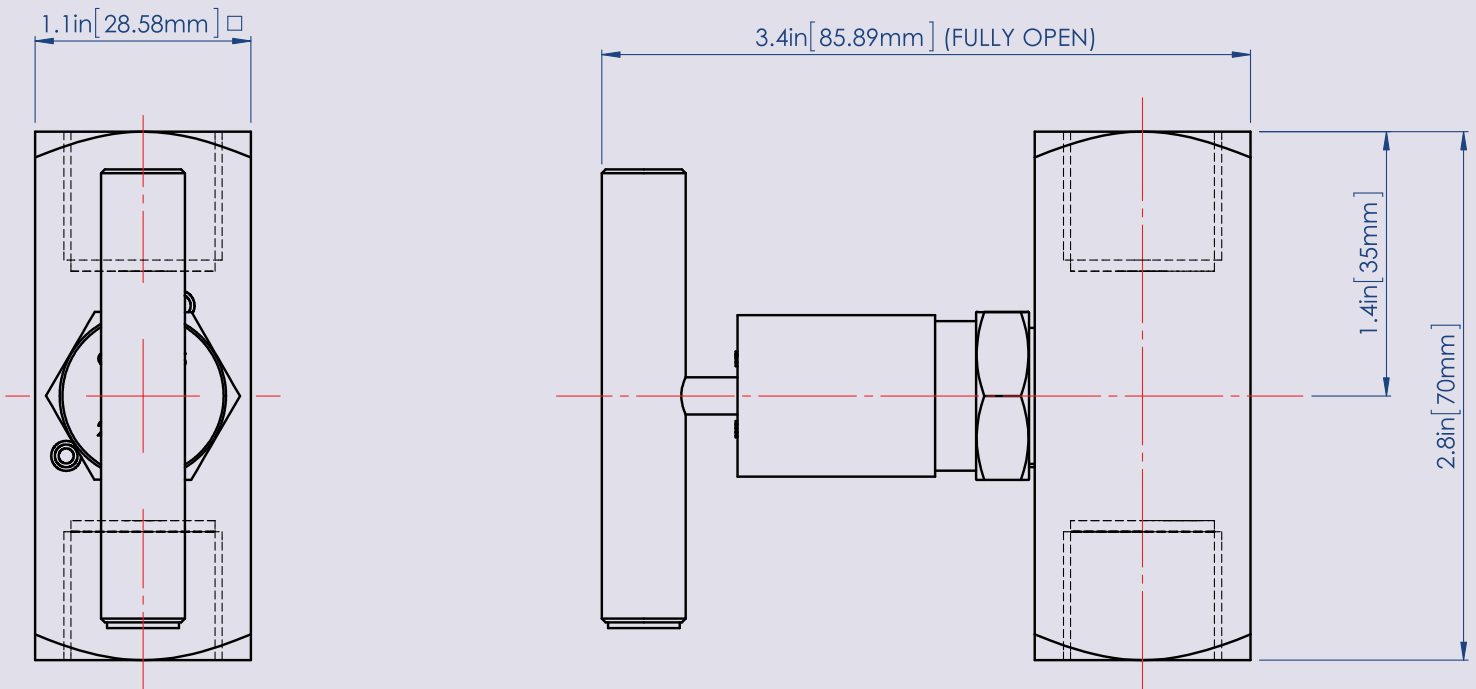
Also available in a range of other materials and options
(See **HOW TO ORDER** Data Sheet Pg.7).

Application

High integrity instrument isolation of pressure gauges and pressure transmitters.



Valve Shown with 1/2" NPT Inlet & Outlet



Dimensions shown in inches (millimetres) are for reference only and are subject to change.

HOW TO ORDER



Hand Valves, Gauge Valves & Manifolds

HM25 Series Hand Valves

Ordering Multiple Options and Accessories

HOKE HM Valves and Manifolds are available with a wide variety of options and accessories that enable valve configurations customized to meet specific requirements. Please select or add designators from the ordering combinations as shown below:

How To Order

Standard items in bold.

Typical Ordering Part Number

HM25 1 1 F 8 6MO AA

TIP

- 1 = Hard**
- 2 = Soft

PACKING

- 1 = PTFE**
- 2 = GRAFOIL®

INLET CONNECTION

- F = Female**

INLET SIZE

- 4 = ¼" NPT
- 8 = ½" NPT

ALLOY

- YL = 316/316L
- HC = HASTELLOY® C276
- M = MONEL®
- D50 = Super Duplex
- TI = Titanium
- TB = Titanium Blue Anodized
- DX3 = Duplex
- 625 = 625 INCONEL®
- 825 = 825 INCONEL®
- 6MO = 6%Mo
- E = Carbon Steel

Options

- | | |
|--------------------------|-------------------------------------|
| AA = 10,000 PSI Rated | AH = BSPP Connections |
| AD = Anti Tamper Isolate | AO = Norsok M-650 Material Required |
| AE = Lockable Isolate | AP = Panel nut on bonnets |

Note: The body & trim parts on all 316/316L Valves & Manifolds comply to NACE MR-01-75 & NORSOK M-650 as standard.

Please consult the factory or your local distributor for information on special connections, o-rings, operating pressures, & temperature ratings.

△When selecting products for specific applications users should refer to our notice at the bottom of page 2. And the guidance of Use of Equipment on page 26.



HOKE, Inc
PO Box 4866
Spartanburg, SC 29305-4866
Phone: (864) 574-7966
Fax: (864) 587-5608

www.hoke.com
sales-hoke@circor.com

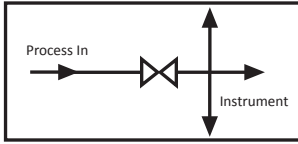


MULTI-PORT GAUGE VALVE

MODEL-HM681



- ISOLATE Blue
- VENT Red
- EQUALIZE Green



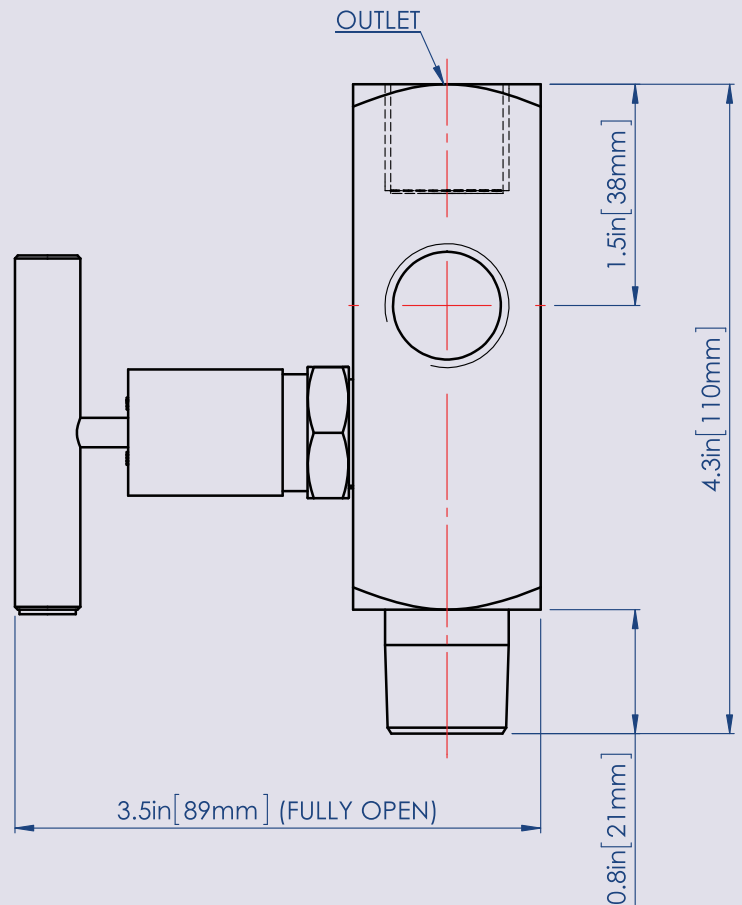
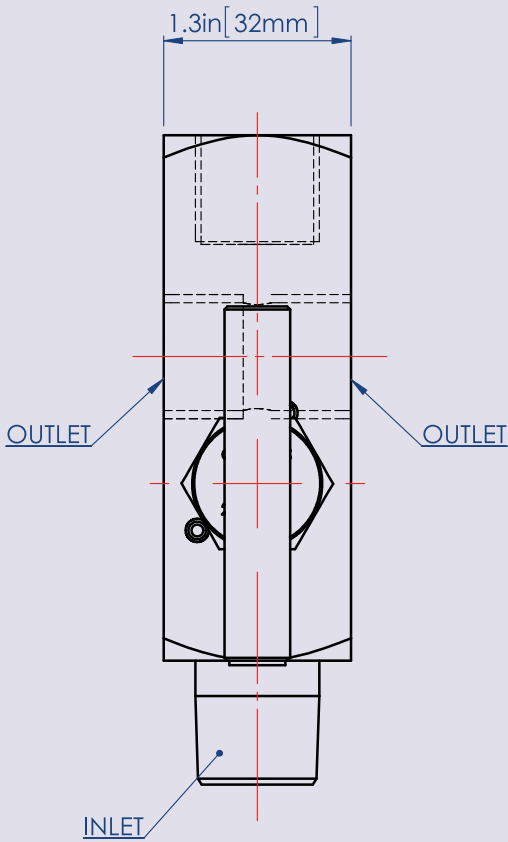
Weight=1.76 lbs(0.8 kg)

Also available in a range of other materials and options (See **HOW TO ORDER** Data Sheet Pg.11).

Application
High integrity instrument isolation of pressure gauges and pressure transmitters.



Valve Shown with 1/2" NPT Inlet & Outlet



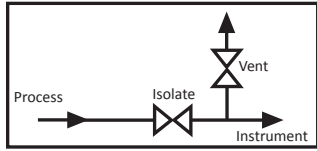
Dimensions shown in inches (millimetres) are for reference only and are subject to change.

SINGLE BLOCK & BLEED GAUGE VALVE

MODEL-HM682



ISOLATE	Blue
VENT	Red
EQUALIZE	Green



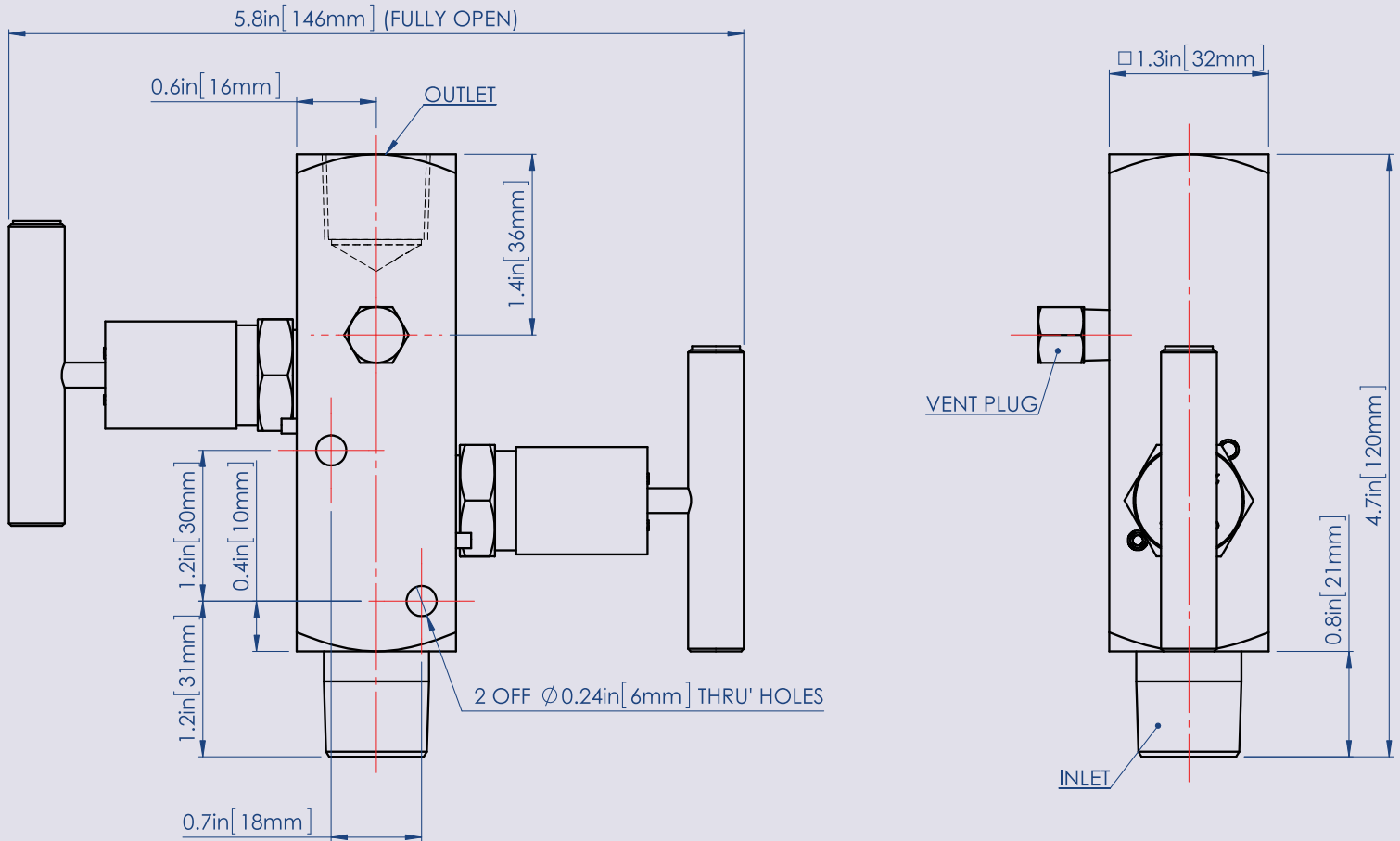
Weight=2.2 lbs(1.0 kg)

Also available in a range of other materials and options (See **HOW TO ORDER** Data Sheet Pg.11).

Application
High integrity instrument isolation of pressure gauges and pressure transmitters.



Valve Shown with 1/2" NPT Inlet & Outlet & 1/4" NPT Vent Plug (Supplied loose)



Dimensions for 6K shown in inches (millimetres) are for reference only and are subject to change.



HOKE, Inc
PO Box 4866
Spartanburg, SC 29305-4866
Phone: (864) 574-7966
Fax: (864) 587-5608

www.hoke.com
sales-hoke@circor.com

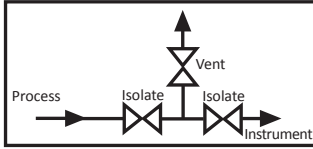


DOUBLE BLOCK & BLEED GAUGE VALVE

MODEL-HM683



ISOLATE Blue
VENT Red
EQUALIZE Green



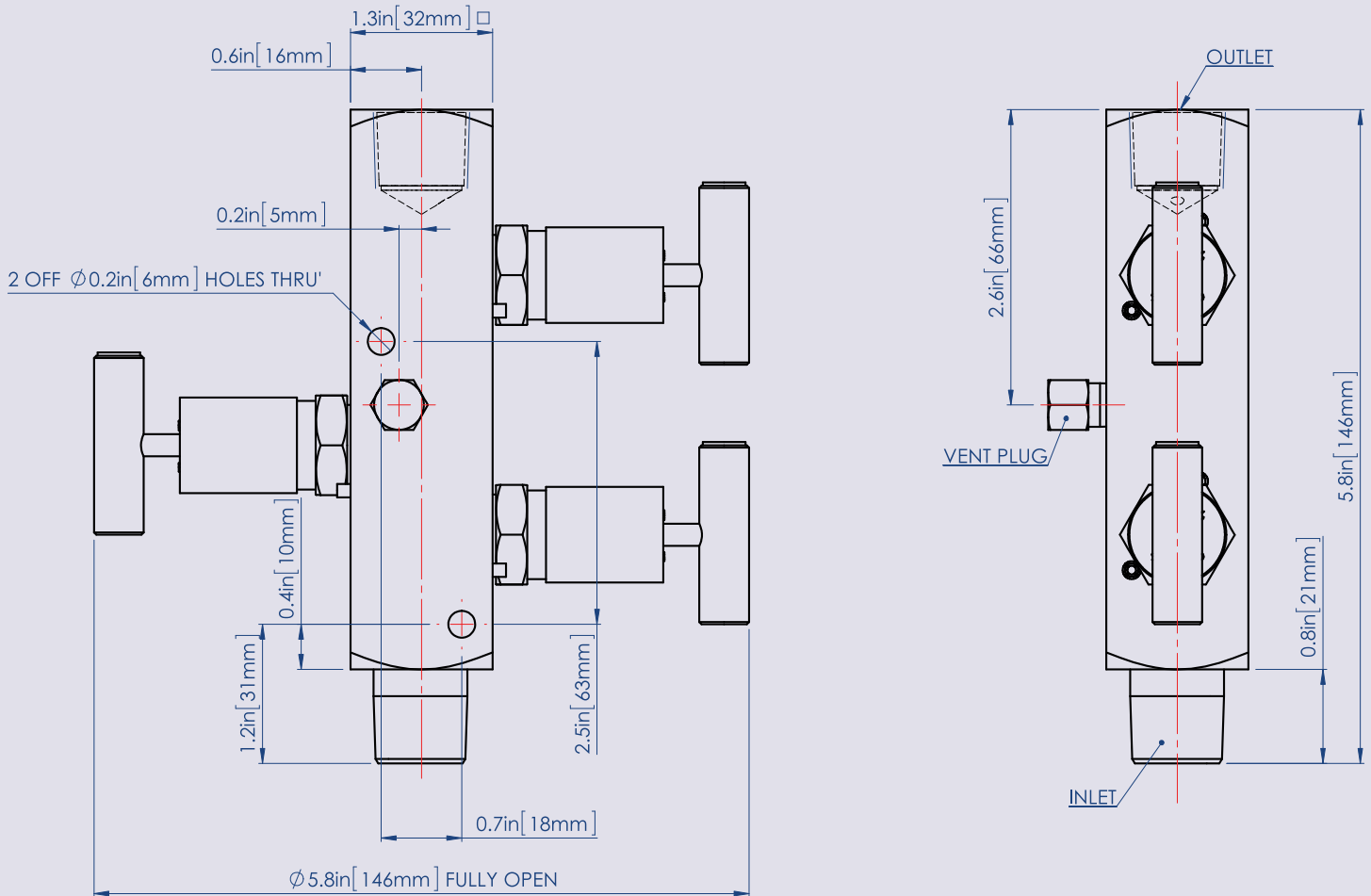
Weight=2.86 lbs(1.3 kg)

Also available in a range of other materials and options (See **HOW TO ORDER** Data Sheet Pg.11).

Application
 High integrity instrument isolation of pressure gauges and pressure transmitters.



Valve Shown with 1/2" NPT Inlet & Outlet & 1/4" NPT Vent Plug (Supplied loose)



Dimensions shown in inches (millimetres) are for reference only and are subject to change.

HOW TO ORDER



Hand Valves, Gauge Valves & Manifolds

HM68 Series Gauge Valves

Ordering Multiple Options and Accessories

HOKE HM Valves and Manifolds are available with a wide variety of options and accessories that enable valve configurations customized to meet specific requirements. Please select or add designators from the ordering combinations as shown below:

How To Order

Standard items in bold.

Typical Ordering Part Number

HM68 2 1 1 F 8 6MO AA

of VALVES

- 1
- 2
- 3

TIP

- 1 = Hard
- 2 = Soft

PACKING

- 1 = PTFE
- 2 = GRAFOIL®

INLET CONNECTION

- F = Female
- M = Male
- L = Male X Female

INLET SIZE

- 4 = 1/4" NPT
- 8 = 1/2" NPT

ALLOY

- YL = 316/316L
- HC = HASTELLOY® C276
- M = MONEL®
- D50 = Super Duplex
- TI = Titanium
- TB = Titanium Blue Anodized
- DX3 = Duplex
- 625 = 625 INCONEL®
- 825 = 825 INCONEL®
- 6MO = 6%Mo
- E = Carbon Steel

Options

- | | |
|--------------------------|-------------------------------------|
| AA = 10,000 PSI Rated | AE = Lockable Isolate |
| AB = Anti Tamper Vent(s) | AH = BSPP Connections |
| AC = Lockable Vent(s) | AO = Norsok M-650 Material Required |
| AD = Anti Tamper Isolate | AP = Panel nut on bonnets |

Note: The body & trim parts on all 316/316L Valves & Manifolds comply to NACE MR-01-75 & NORSOK M-650 as standard.

Please consult the factory or your local distributor for information on special connections, o-rings, operating pressures, & temperature ratings.

△When selecting products for specific applications users should refer to our notice at the bottom of page 2. And the guidance of Use of Equipment on page 26.



HOKE, Inc
 PO Box 4866
 Spartanburg, SC 29305-4866
 Phone: (864) 574-7966
 Fax: (864) 587-5608

www.hoke.com
 sales-hoke@circor.com

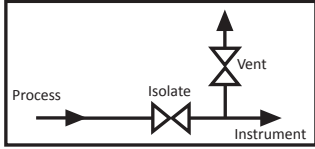


REMOTE MOUNT 2-VALVE MANIFOLD

MODEL-HM8232



ISOLATE Blue
VENT Red
EQUALIZE Green



Weight=1.98 lbs(0.9 kg)

Also available in a range of other materials and options
 (See **HOW TO ORDER** Data Sheet Pg.22).

Using the 2-valve manifold

In normal operation the “isolate” valve is open while the “vent” valve is closed.

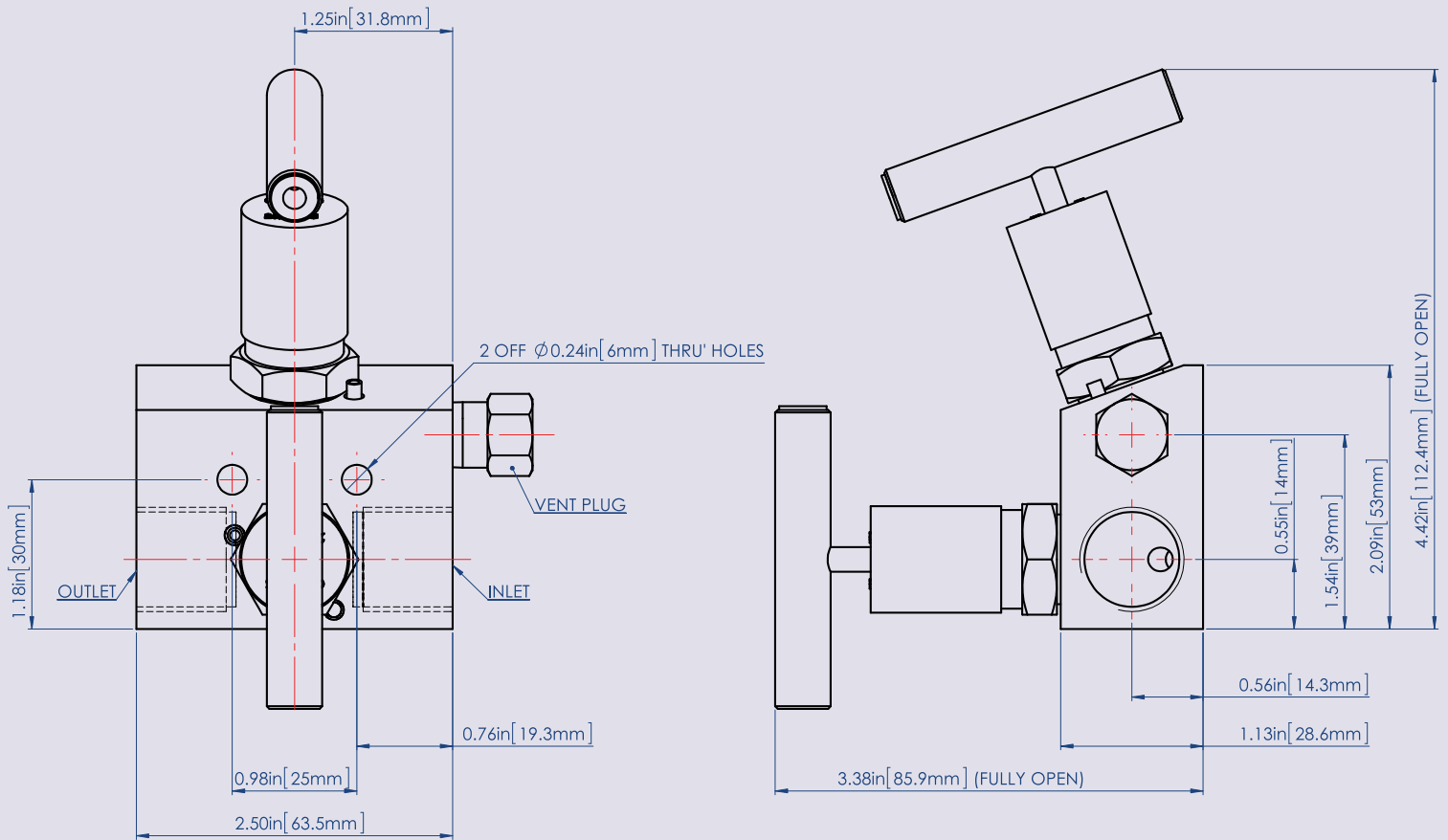
To remove the instrument, first close the “isolate” valve, then open the “vent” valve to relieve pressure upstream of the “isolate” valve.

Calibration option

By connecting a calibration gauge to the vent port, it is possible to check the calibration of the instrument without removing it from the installation.



Valve Shown with 1/2" NPT Inlet & Outlet & 1/4" NPT Vent Plug (Supplied loose)



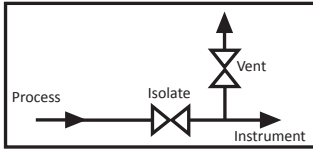
Dimensions shown in inches (millimetres) are for reference only and are subject to change.

DIRECT MOUNT 2-VALVE MANIFOLD

MODEL-HM8212



ISOLATE Blue
VENT Red
EQUALIZE Green



Weight=3.08 lbs(1.4 kg)

Also available in a range of other materials and options (See **HOW TO ORDER** Data Sheet Pg.22).

Using the 2-valve manifold

In normal operation the "isolate" valve is open while the "vent" valve is closed.

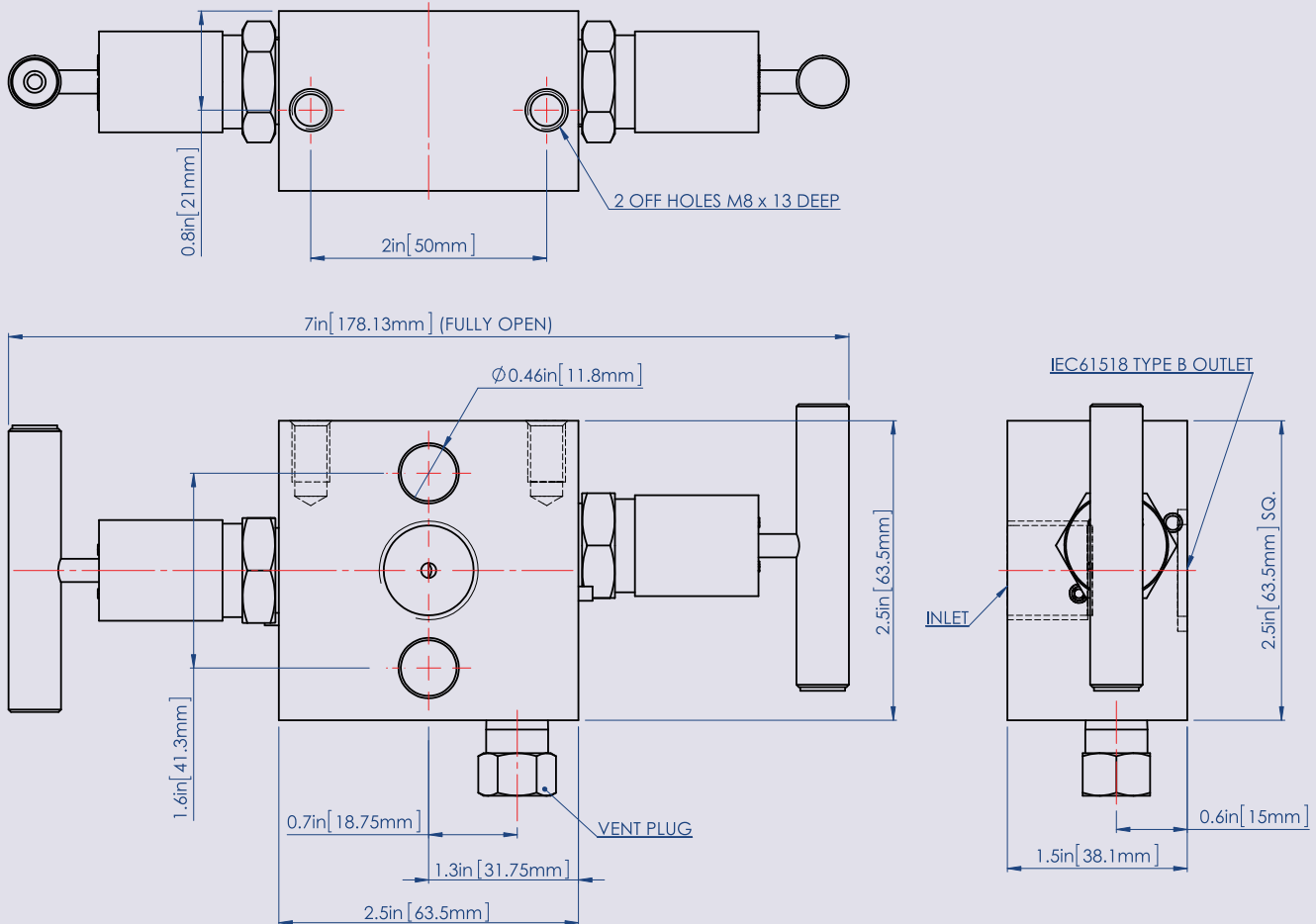
To remove the instrument, first close the "isolate" valve, then open the "vent" valve to relieve pressure upstream of the "isolate" valve.

Calibration option

By connecting a calibration gauge to the vent port, it is possible to check the calibration of the instrument without removing it from the installation.



Valve Shown with 1/2" NPT Inlet & 1/4" NPT Vent Plug (Supplied loose)



Dimensions shown in inches (millimetres) are for reference only and are subject to change.



HOKE, Inc
 PO Box 4866
 Spartanburg, SC 29305-4866
 Phone: (864) 574-7966
 Fax: (864) 587-5608

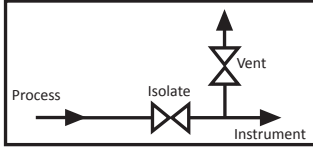
www.hoke.com
 sales-hoke@circor.com



**REMOTE MOUNT 2-VALVE MANIFOLD
(FLAT FACE)
MODEL-HM8262**



ISOLATE Blue
VENT Red
EQUALIZE Green



Weight=2.6 lbs(1.2 kg)

Also available in a range of other materials and options
(See **HOW TO ORDER** Data Sheet Pg.22).

Using the 2-valve manifold

In normal operation the “isolate” valve is open while the “vent” valve is closed.

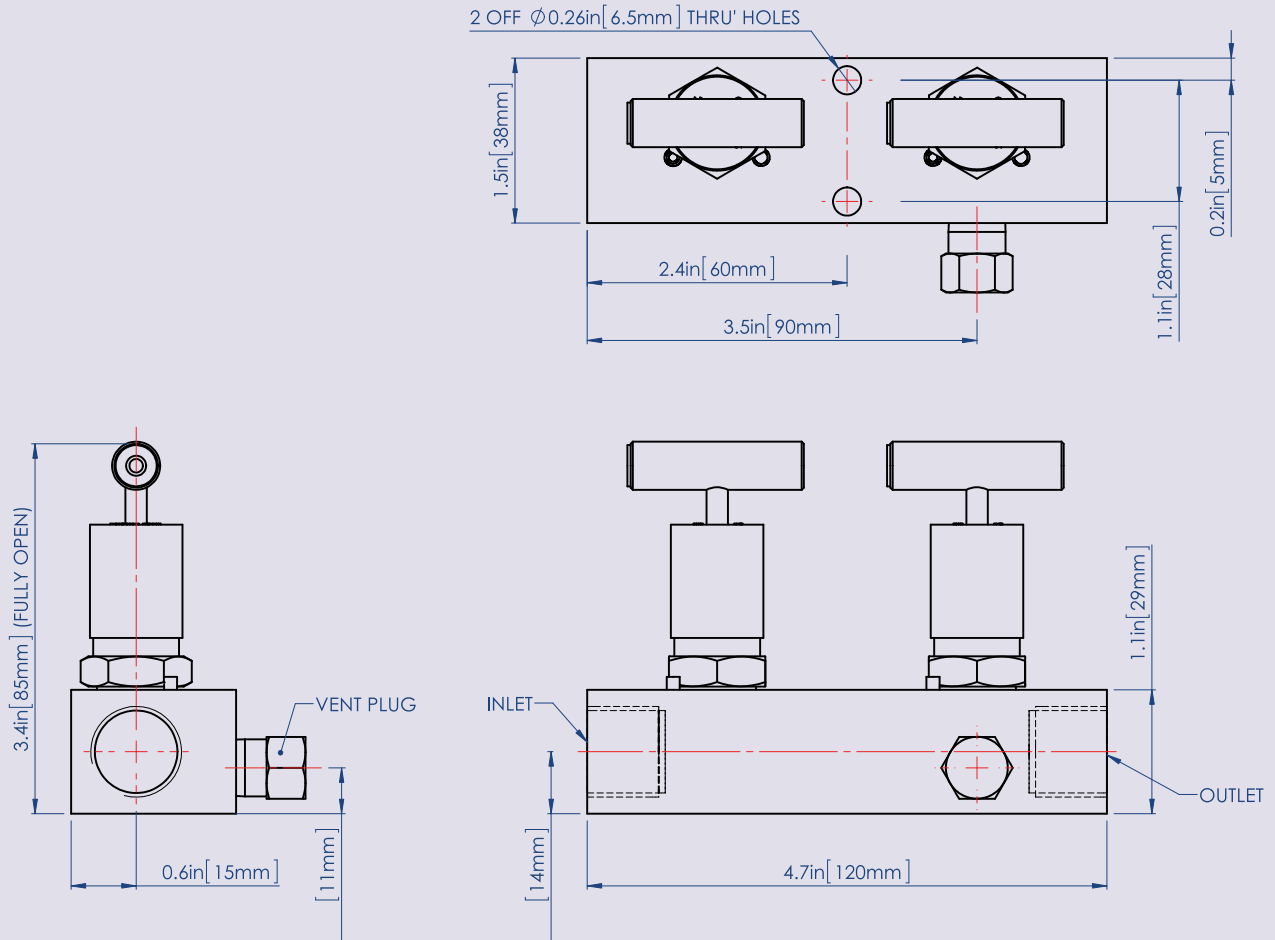
To remove the instrument, first close the “isolate” valve, then open the “vent” valve to relieve pressure upstream of the “isolate” valve.

Calibration option

By connecting a calibration gauge to the vent port, it is possible to check the calibration of the instrument without removing it from the installation.



Valve Shown with 1/2" NPT Inlet & Outlet & 1/4" NPT Vent Plug (Supplied loose)



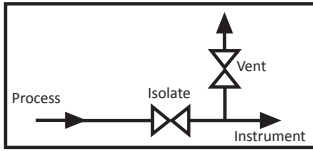
Dimensions shown in inches (millimetres) are for reference only and are subject to change.

**DIRECT MOUNT 2-VALVE MANIFOLD
(ENCLOSURE)
MODEL-HM8292**



ISOLATE Blue
VENT Red
EQUALIZE Green

Weight=6.2 lbs(2.8 kg)



Also available in a range of other materials and options
(See **HOW TO ORDER** Data Sheet Pg.22).

Using the 2-valve manifold

In normal operation the “isolate” valve is open while the “vent” valve is closed.

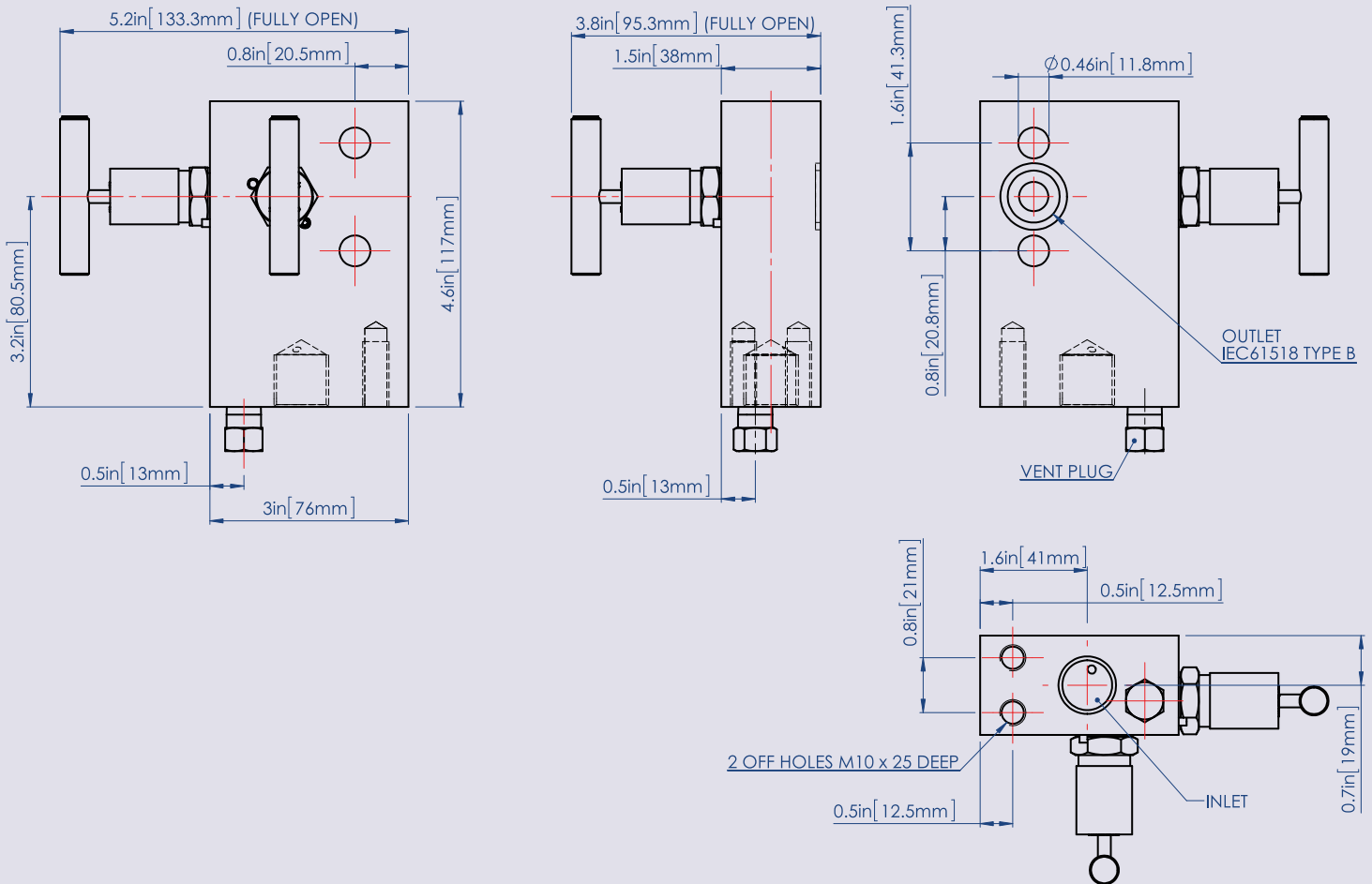
To remove the instrument, first close the “isolate” valve, then open the “vent” valve to relieve pressure upstream of the “isolate” valve.

Calibration option

By connecting a calibration gauge to the vent port, it is possible to check the calibration of the instrument without removing it from the installation.



Valve Shown with 1/2" NPT Inlet & 1/4" NPT Vent Plug (Supplied loose)



Dimensions shown in inches (millimetres) are for reference only and are subject to change.



HOKE, Inc
PO Box 4866
Spartanburg, SC 29305-4866
Phone: (864) 574-7966
Fax: (864) 587-5608

www.hoke.com
sales-hoke@circor.com

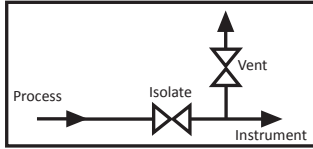


REMOTE MOUNT 2-VALVE MANIFOLD

MODEL-HM82GAM8 WITH 1/2" INTEGRAL GA ADAPTER



ISOLATE	Blue
VENT	Red
EQUALIZE	Green



Weight=3.3 lbs(1.5 kg)

Also available in a range of other materials and options
(See **HOW TO ORDER** Data Sheet Pg.22).

Using the 2-valve manifold

In normal operation the "isolate" valve is open while the "vent" valve is closed.

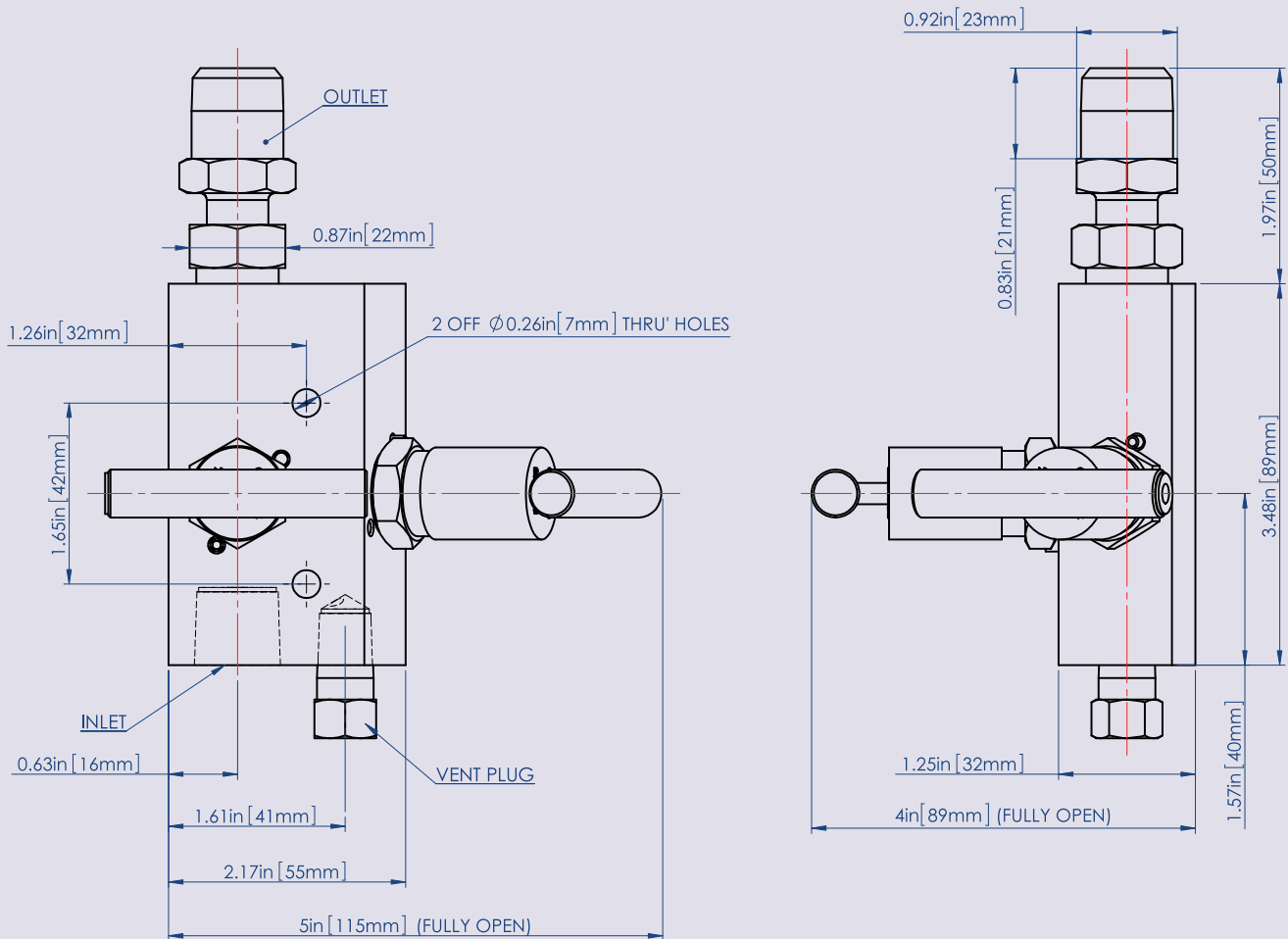
To remove the instrument, first close the "isolate" valve, then open the "vent" valve to relieve pressure upstream of the "isolate" valve.

Calibration option

By connecting a calibration gauge to the vent port, it is possible to check the calibration of the instrument without removing it from the installation.



Valve Shown with 1/2" NPT Inlet & Outlet & 1/4" NPT Vent Plug (Supplied loose)



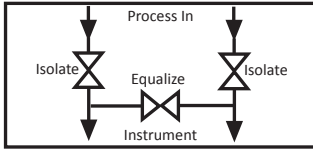
Dimensions shown in inches (millimetres) are for reference only and are subject to change.

REMOTE MOUNT 3-VALVE MANIFOLD

MODEL-HM8332



ISOLATE Blue
VENT Red
EQUALIZE Green



Weight=3.08 lbs(1.4 kg)

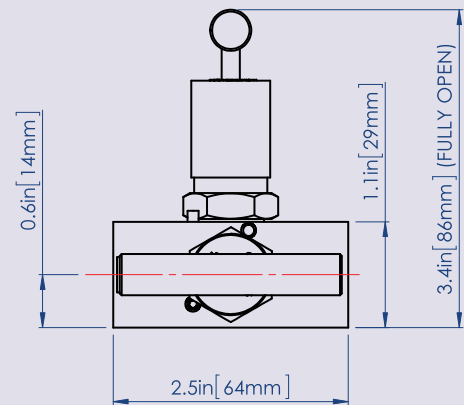
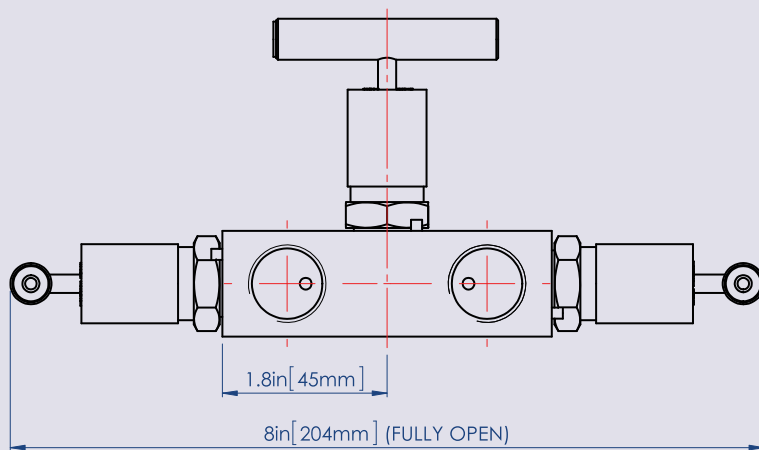
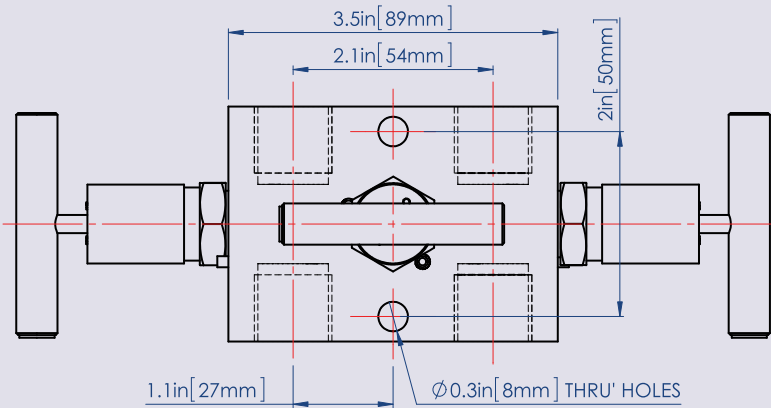
Also available in a range of other materials and options (See **HOW TO ORDER** Data Sheet Pg.22).

Using the 3-valve manifold

In normal operation the "isolate" valves are open while the "equalize" valve is closed. This provides a differential pressure reading to the pressure gauge or transmitter. To zero the instrument, first close the downstream "isolate" valve then open the "equalize" valve and adjust the zero setting on the instrument.



Valve Shown with 1/2" NPT Inlet & Outlet



Dimensions shown in inches (millimetres) are for reference only and are subject to change.



HOKE, Inc
 PO Box 4866
 Spartanburg, SC 29305-4866
 Phone: (864) 574-7966
 Fax: (864) 587-5608

www.hoke.com
 sales-hoke@circor.com



DIRECT MOUNT 3-VALVE MANIFOLD

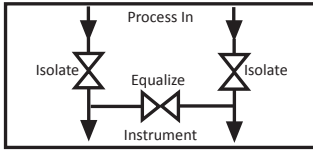


Hand Valves, Gauge Valves & Manifolds

MODEL-HM8312

- ISOLATE
- VENT
- EQUALIZE

Blue
Red
Green



Weight=3.52 lbs(1.6 kg)

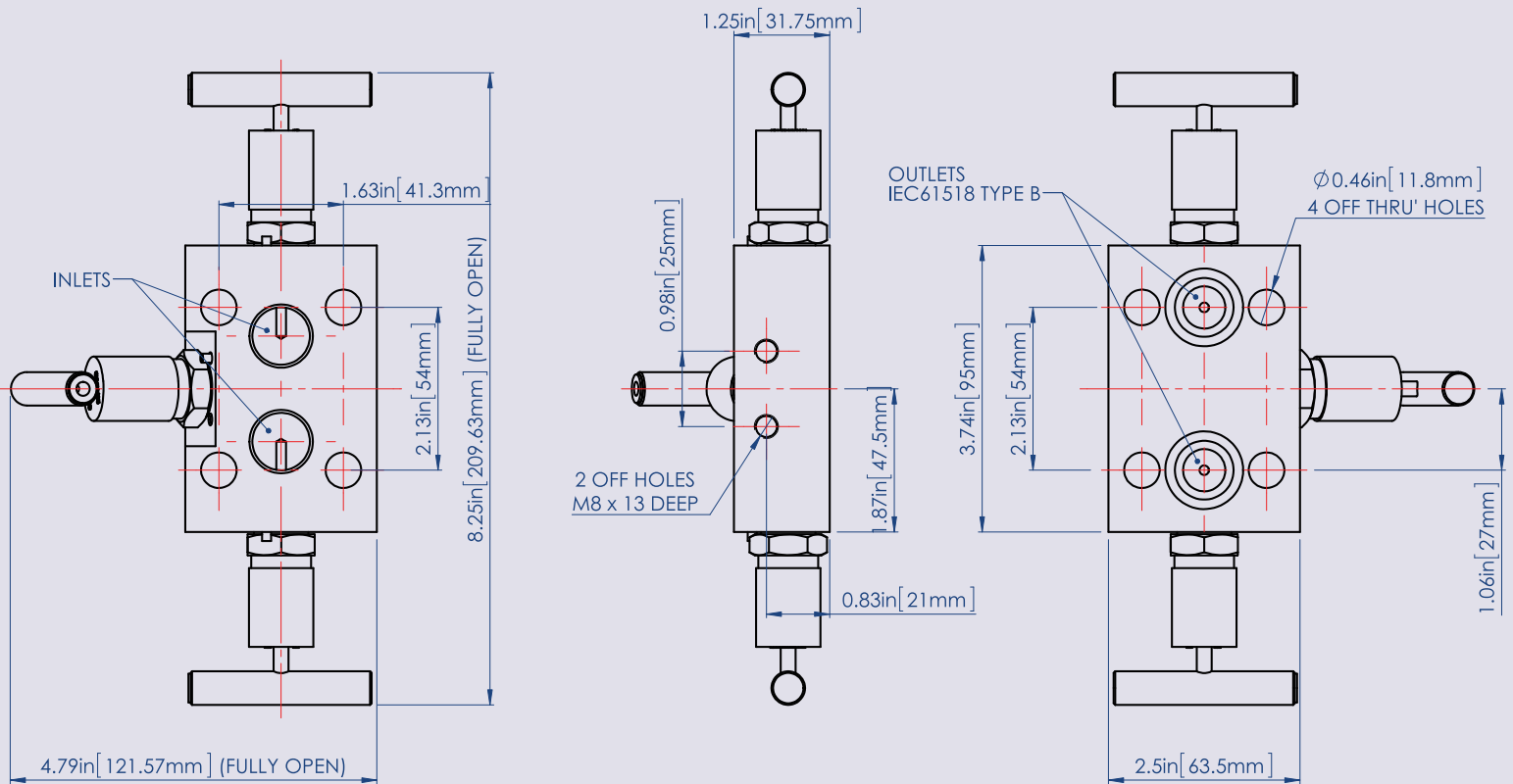
Also available in a range of other materials and options (See **HOW TO ORDER** Data Sheet Pg.22).

Using the 3-valve manifold

In normal operation the “isolate” valves are open while the “equalize” valve is closed. This provides a differential pressure reading to the pressure gauge or transmitter. To zero the instrument, first close the downstream “isolate” valve then open the “equalize” valve and adjust the zero setting on the instrument.



Valve Shown with 1/2" NPT Inlet



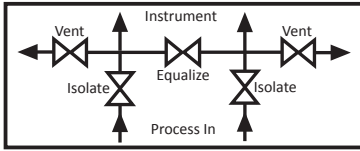
Dimensions shown in inches (millimetres) are for reference only and are subject to change.

REMOTE MOUNT 5-VALVE MANIFOLD



MODEL-HM8532

ISOLATE Blue
VENT Red
EQUALIZE Green



Weight=5.95 lbs(2.7 kg)

Also available in a range of other materials and options
 (See **HOW TO ORDER** Data Sheet Pg.22).

Using the 5-valve manifold

In normal operation the “isolate” valves are open while the “equalize” and “vent” valves are closed. This provides a differential pressure reading to the pressure gauge or transmitter.

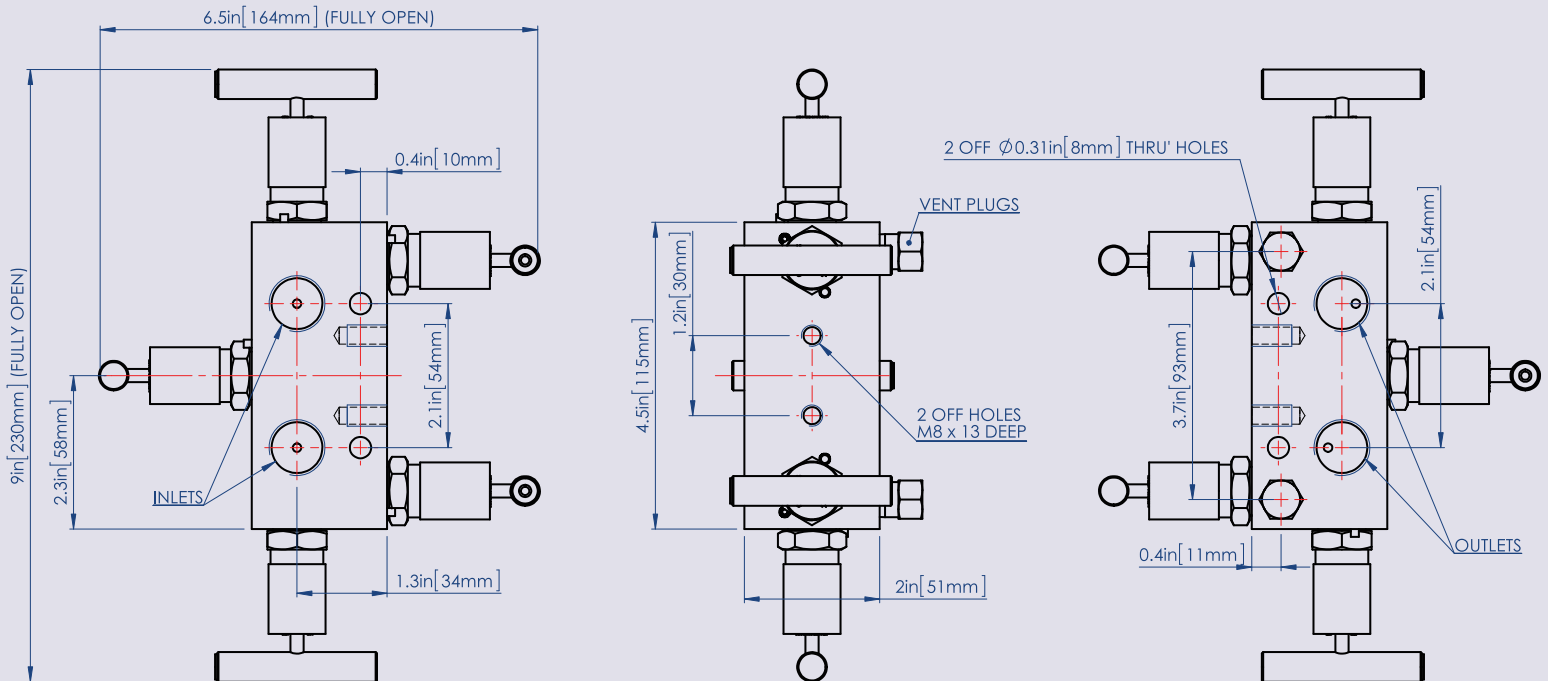
To zero the instrument, first close both “vent” valves and the downstream “isolate” valve. Then open the “equalize” valve and adjust the zero setting on the instrument. To remove the instrument, first close both “isolate” valves, then open the “equalize” valves to relieve pressure between the manifold and the instrument.

Calibration options

An option provided by 5-valve manifolds which is not available on 3-valve types is connecting the “vent” port to known pressure sources to check the calibration of the instrument.



Valve Shown with 1/2" NPT Inlet & Outlet & 1/4" NPT Vent Plugs (Supplied loose)



HOKE, Inc
 PO Box 4866
 Spartanburg, SC 29305-4866
 Phone: (864) 574-7966
 Fax: (864) 587-5608

www.hoke.com
 sales-hoke@circor.com

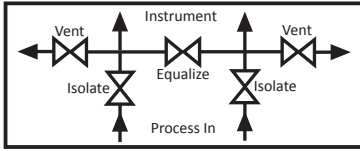


DIRECT MOUNT 5-VALVE MANIFOLD

MODEL-HM8512



ISOLATE	Blue
VENT	Red
EQUALIZE	Green



Weight=6.17 lbs(2.8 kg)

Also available in a range of other materials and options (See **HOW TO ORDER** Data Sheet Pg.22).

Using the 5-valve manifold

In normal operation the “isolate” valves are open while the “equalize” and “vent” valves are closed. This provides a differential pressure reading to the pressure gauge or transmitter.

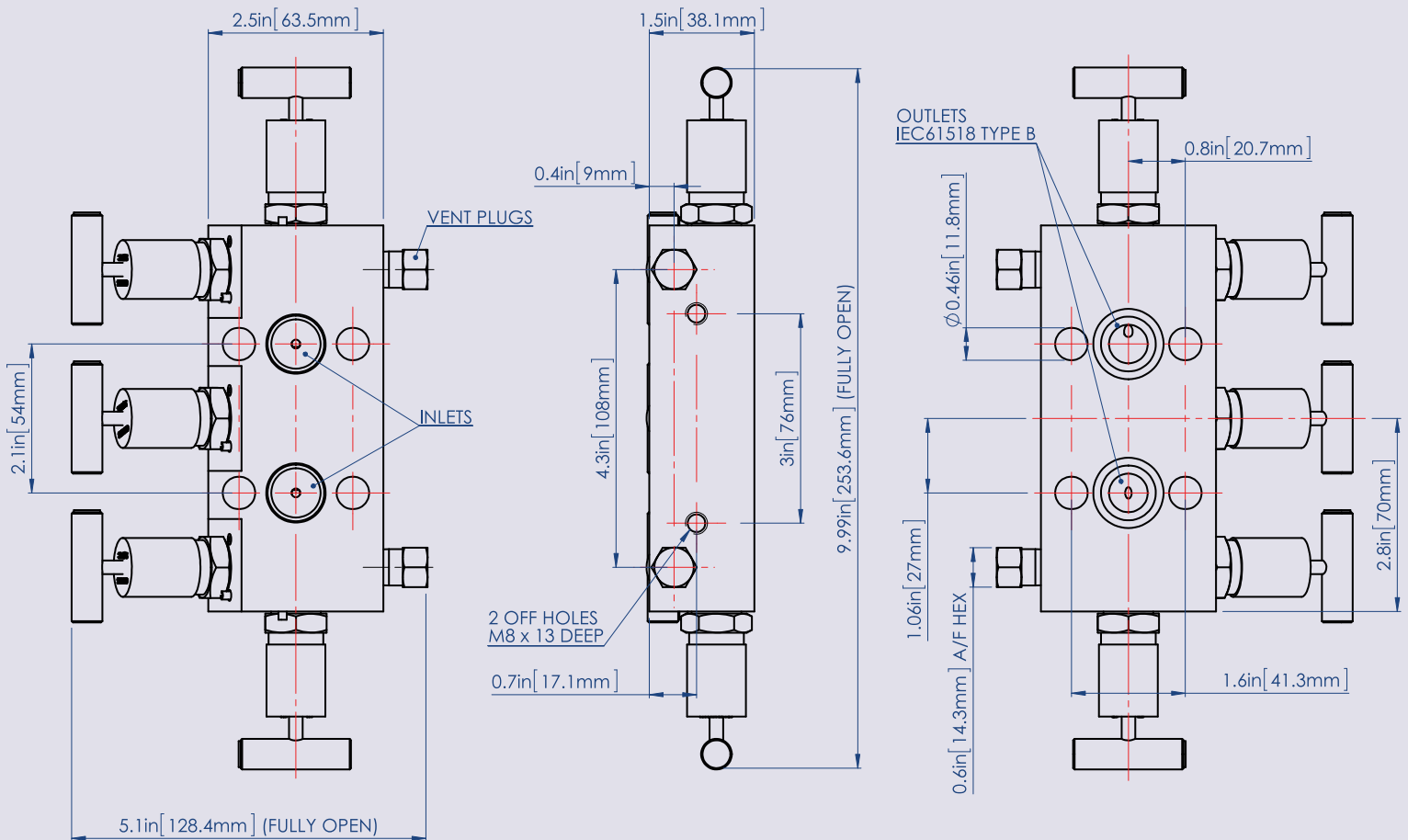
To zero the instrument, first close both “vent” valves and the downstream “isolate” valve. Then open the “equalize” valve and adjust the zero setting on the instrument. To remove the instrument, first close both “isolate” valves, then open the “equalize” valves to relieve pressure between the manifold and the instrument.

Calibration options

An option provided by 5-valve manifolds which is not available on 3-valve types is connecting the “vent” port to known pressure sources to check the calibration of the instrument.



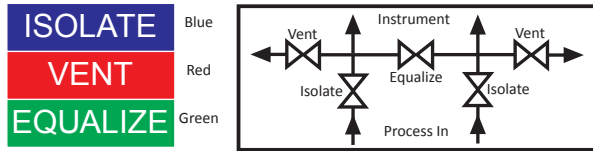
Valve Shown with 1/2" NPT Inlet & 1/4" NPT Vent Plugs (Supplied loose)



Dimensions shown in inches (millimetres) are for reference only and are subject to change.

**DIRECT MOUNT 5-VALVE MANIFOLD
(ENCLOSURE)
MODEL-HM8592**

HOKE Hand Valves, Gauge Valves & Manifolds



Weight=12.8 lbs(5.8 kg)

Also available in a range of other materials and options
(See **HOW TO ORDER** Data Sheet Pg.22).

Using the 5-valve manifold

In normal operation the “isolate” valves are open while the “equalize” and “vent” valves are closed. This provides a differential pressure reading to the pressure gauge or transmitter.

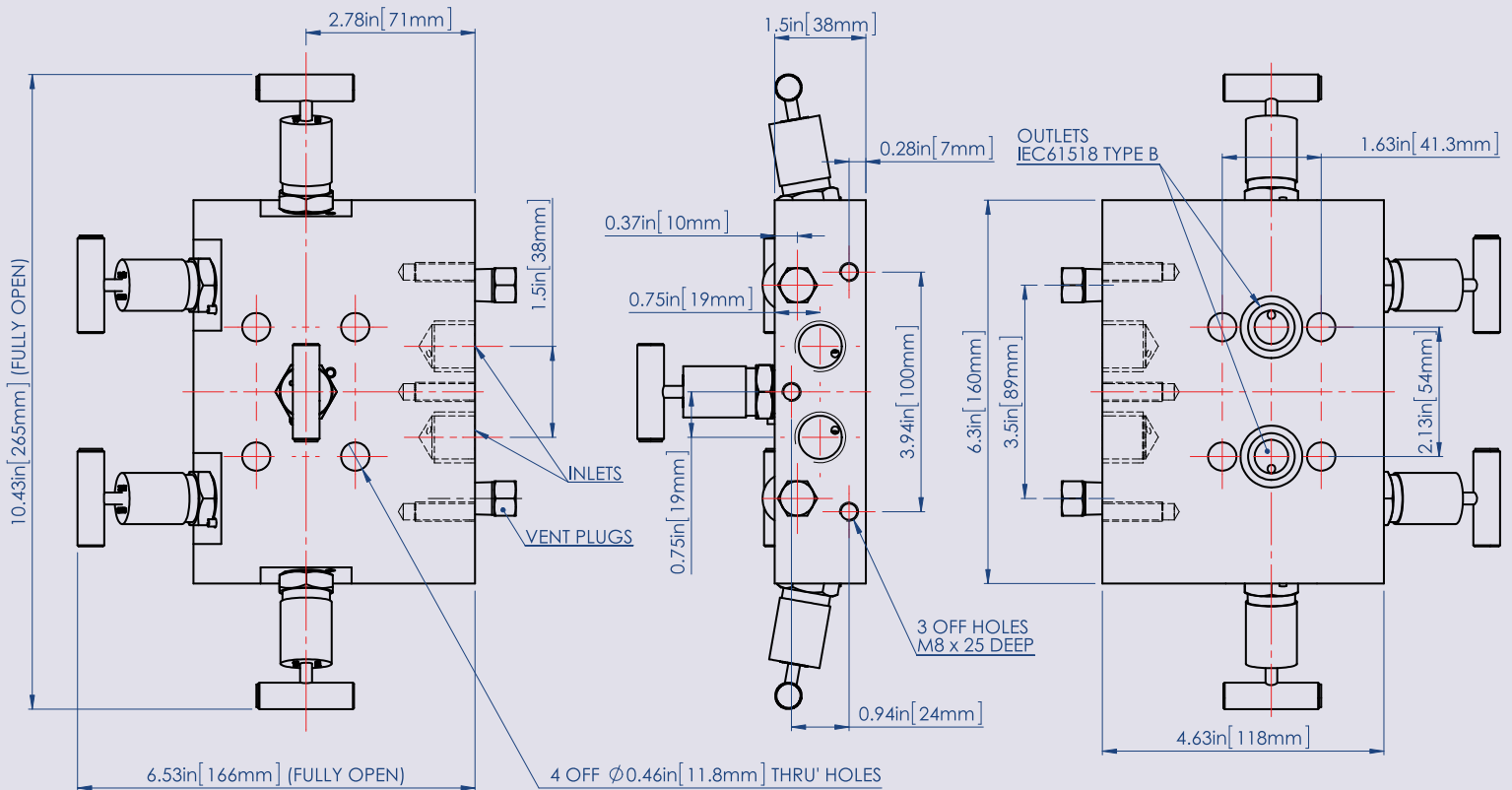
To zero the instrument, first close both “vent” valves and the downstream “isolate” valve. Then open the “equalize” valve and adjust the zero setting on the instrument. To remove the instrument, first close both “isolate” valves, then open the “equalize” valves to relieve pressure between the manifold and the instrument.

Calibration options

An option provided by 5-valve manifolds which is not available on 3-valve types is connecting the “vent” port to known pressure sources to check the calibration of the instrument.



Valve Shown with 1/2" NPT Inlet & 1/4" NPT Vent Plugs (Supplied loose)



Dimensions shown in inches (millimetres) are for reference only and are subject to change.



HOKE, Inc
PO Box 4866
Spartanburg, SC 29305-4866
Phone: (864) 574-7966
Fax: (864) 587-5608

www.hoke.com
sales-hoke@circor.com



HOW TO ORDER



Hand Valves, Gauge Valves & Manifolds

HM8 Series Manifolds

Ordering Multiple Options and Accessories

HOKE HM Valves and Manifolds are available with a wide variety of options and accessories that enable valve configurations customized to meet specific requirements. Please select or add designators from the ordering combinations as shown below:

How To Order

Standard items in bold.

Typical Ordering Part Number

HM8 3 1 2 1 1 F 8 6MO AA

of VALVES

- 2
- 3
- 5

TYPE

- 1 = Direct
- 3 = Remote
- 6 = Flat Face Remote
- 9 = Direct Enclosure

FIXED

- 2

TIP

- 1 = Hard
- 2 = Soft

PACKING

- 1 = PTFE
- 2 = GRAFOIL®

ALLOY

- YL = 316/316L
- HC = HASTELLOY® C276
- M = MONEL®
- D50 = Super Duplex
- TI = Titanium
- TB = Titanium Blue Anodized
- DX3 = Duplex
- 625 = 625 INCONEL®
- 825 = 825 INCONEL®
- 6MO = 6%Mo
- E = Carbon Steel

INLET SIZE

- 8 = 1/2"
- 10 = 10mm

INLET CONNECTION

- F = Female
- P = Socket Weld
- G = Integral GYROLOK® - please consult HOKE® for details
- Z = Integral Metric

Options

AA = 10,000 PSI Rated	AH = BSPP Connections	AL = Extended Carbon Steel Bolts Supplied
AB = Anti Tamper Vent(s)	AI = Std Carbon Steel Bolts Supplied	(Emerson Coplanar Flange) - Bolt Clearance 30MM
AC = Lockable Vent(s)		Bolt Clearance 16MM
AD = Anti Tamper Isolate	AJ = Std 316 Stainless Steel Bolts Supplied	AM = Extended 316 Stainless Steel Bolts Supplied
AE = Lockable Isolate		(Emerson Coplanar Flange) - Bolt Clearance 30MM
AF = Anti Tamper Equalize	AK = Std 6MO Bolts Supplied	AN = Extended 6MO Bolts Supplied
AG = Lockable Equalize		(Emerson Coplanar Flange) - Bolt Clearance 30MM
		AO = Norsok M-650 Material Required
		AP = Panel nut on bonnets

Note: The body & trim parts on all 316/316L Valves & Manifolds comply to NACE MR-01-75 & NORSOK M-650 as standard.

Please consult the factory or your local distributor for information on special connections, o-rings, operating pressures, & temperature ratings.

△When selecting products for specific applications users should refer to our notice at the bottom of page 2. And the guidance of Use of Equipment on page 26.



HOKE, Inc
 PO Box 4866
 Spartanburg, SC 29305-4866
 Phone: (864) 574-7966
 Fax: (864) 587-5608

www.hoke.com
 sales-hoke@circor.com



MOUNTING BRACKET KITS



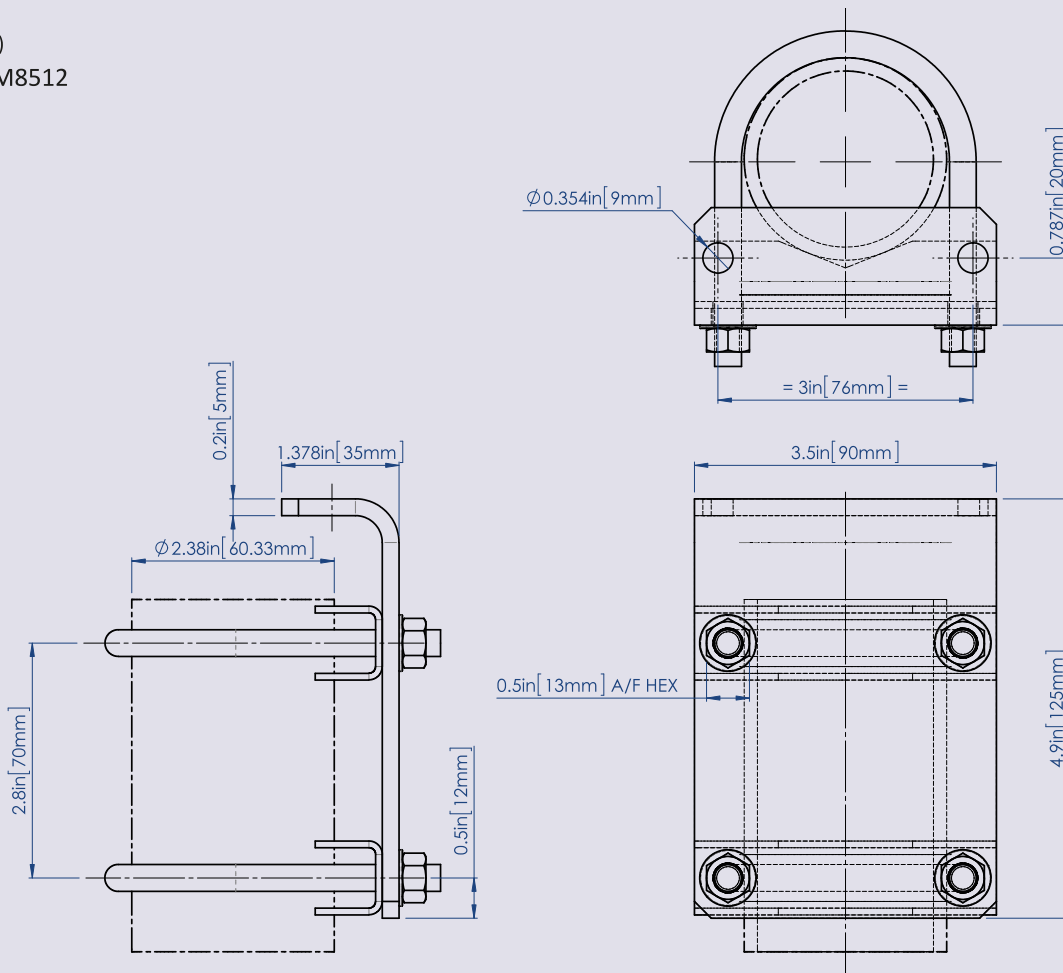
Mounting bracket kits enable a user to mount a manifold onto a gauge stand or a 2in (50mm) nominal bore pipe stand. Mounting kits are manufactured in stainless steel and allow the instrument to be removed without disturbing the impulse pipework connection. They also add support to the complete assembly.



HM8512BKT

Weight=2.20 lbs(1.0 kg)

Used On Model HM8512

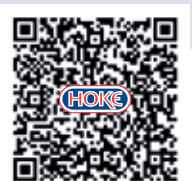


Dimensions shown in inches (millimetres) are for reference only and are subject to change.



HOKE, Inc
 PO Box 4866
 Spartanburg, SC 29305-4866
 Phone: (864) 574-7966
 Fax: (864) 587-5608

www.hoke.com
sales-hoke@circor.com

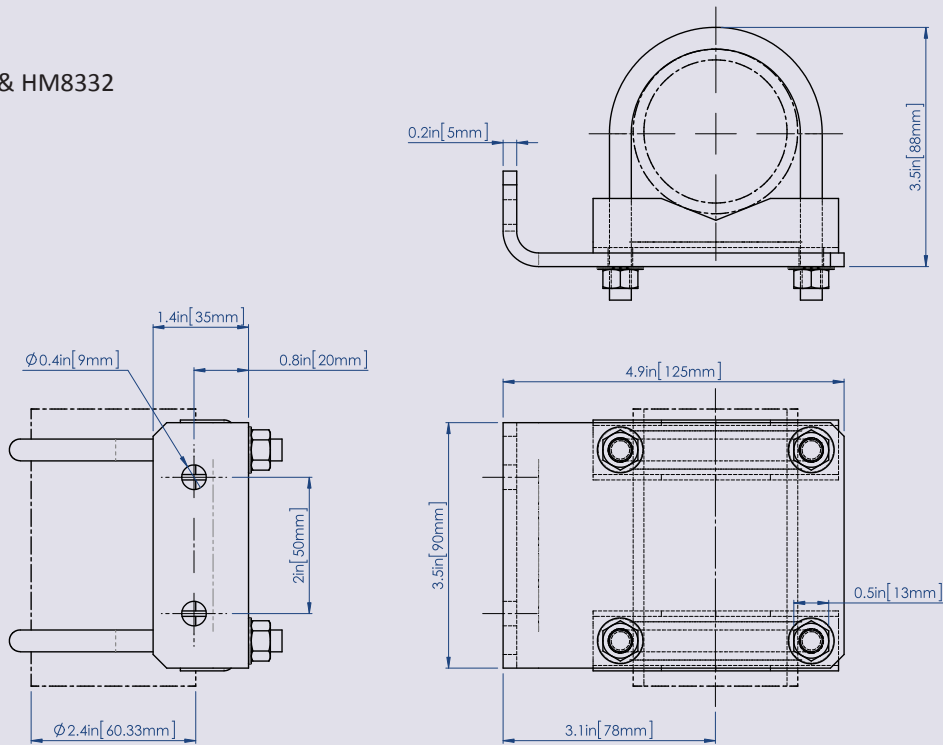


MOUNTING BRACKET KITS

HM8000BKT

Weight=2.20 lbs(1.0 kg)

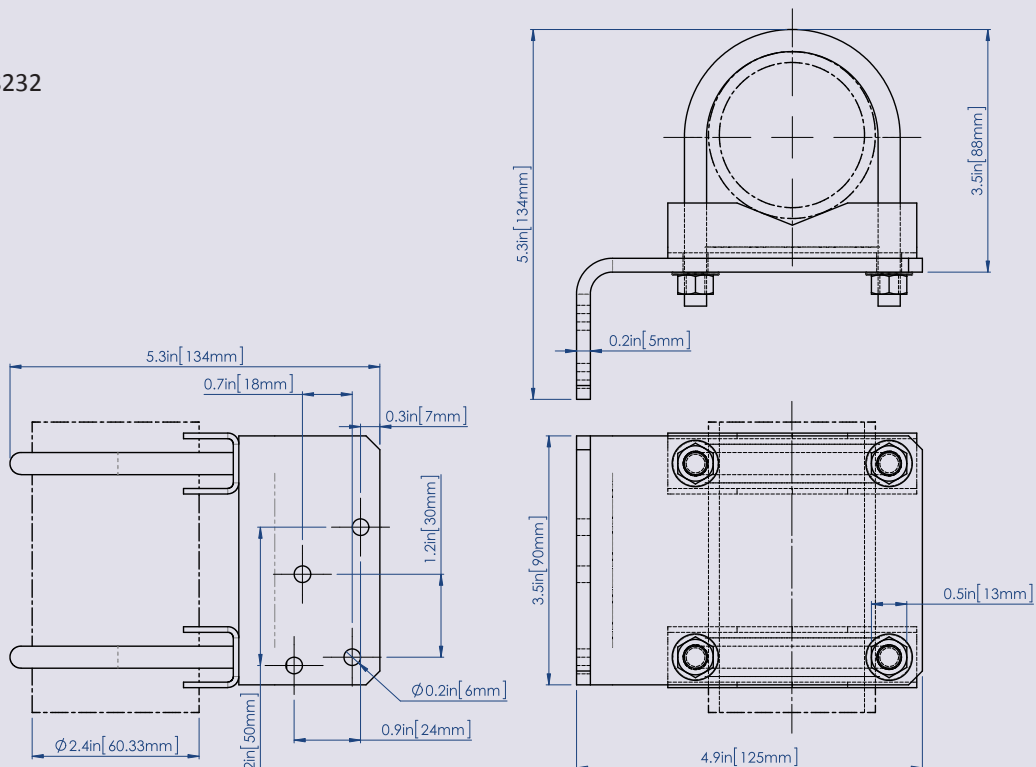
Used On Model HM8212 & HM8332



HM8232BKT

Weight=2.20 lbs(1.0 kg)

Used On Model HM8232



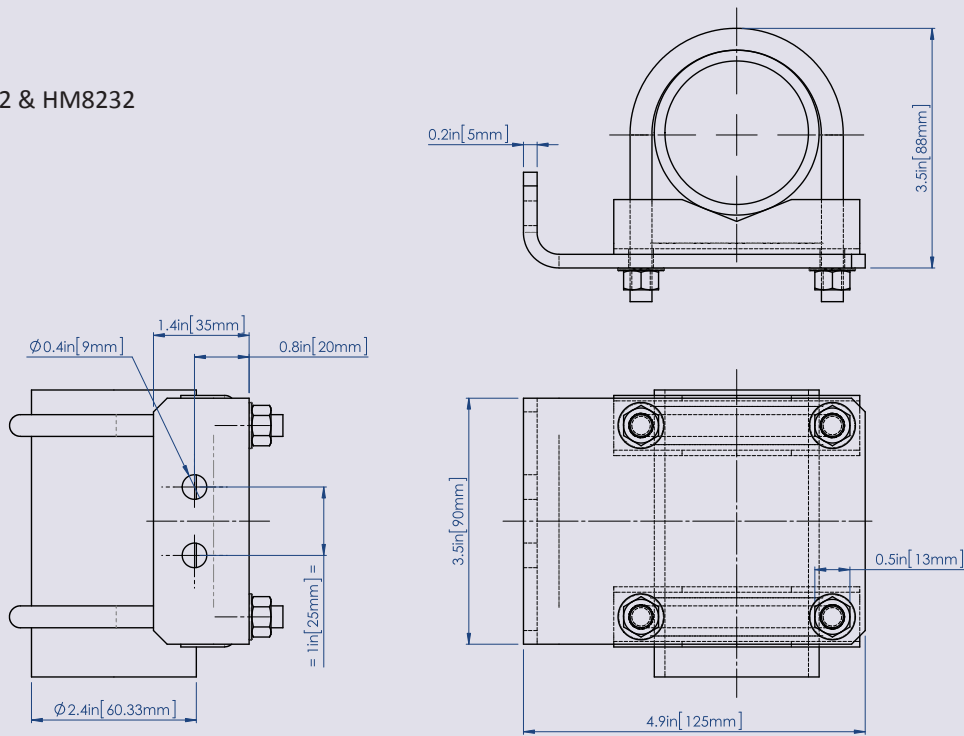
Dimensions shown in inches (millimetres) are for reference only and are subject to change.

MOUNTING BRACKET KITS

HM8100BKT

Weight=2.20 lbs(1.0 kg)

Used On Model HM8312 & HM8232



Dimensions shown in inches (millimetres) are for reference only and are subject to change.

△When selecting products for specific applications users should refer to our notice at the bottom of page 2. And the guidance of Use of Equipment on page 26.



HOKE, Inc
PO Box 4866
Spartanburg, SC 29305-4866
Phone: (864) 574-7966
● Fax: (864) 587-5608

www.hoke.com
sales-hoke@circor.com



Installation & use of equipment should be done by trained personnel!

1 MATERIALS

- Materials must be compatible with medium.
- Pressure and temperature also have direct bearing on the correct seal & body material to be used and must be considered when specifying. See pressure/temperature ratings table contained in our printed literature.
- *If in any doubt, consult HOKE®.*

2 THREADS AND JOINTING

- All pressure connections should be leak tight and should be observed when first applying pressure.
- Recommended maximum operating pressure for each size of thread and type of material must not be exceeded. Please note the stated pressures represent the maximum applied pressure. If in doubt, consult the manufacturer.
- Care must be taken to ensure mis-match of threads does not occur.
- Mating female connections must have a pressure rating that is compatible with the pressure range of the product.
- Valves with parallel threads must have the independent seal made on the flat seating using a washer or bonded seal of material compatible with the pressure medium.
- Valves with tapered threads have the joint made by mating of the threads. It is common practice to apply jointing material to the male thread. This must be compatible with the pressure medium and applied in the correct quantity to ensure non-interference with the mating of the threads.
- NPT and other tapered thread forms when manufactured to the standard specification may not be adequate to offer sufficient thread engagement for safe use under pressure.
- Particular care must be taken to ensure the valve has the correct pressure rating for the application.

3 INSTALLATION

- When joining up a valve to the system, the system must not be pressurized.
- If the valve is already fitted to a gauge at time of installation, the valve should be in the closed position to prevent the build up of pressure from entering the gauge. The valve should then be opened slowly and care taken to ensure the pressure entering the gauge does not exceed its pressure rating.
- When the valve does not have a gauge fitted at time of installation (i.e., with an open port) the valve should be in the open position which will prevent build up of pressure within the valve. Care should therefore be taken to confirm that all systems are sealed before pressurizing.
- Manifolds and equalizing valves are accompanied by specific installation instructions and these should be referred to before proceeding with installation.

4 MAINTENANCE

- Valves etc. should be part of a planned maintenance programme to ensure they continue to function properly.
- The time interval between examinations will vary depending upon site conditions, the number of opening and shutting operations etc. and should be determined in the light of experience.
- Threaded connections should be checked for leaks and tightened as required.
- If leaking through the packing is evident, loosen locknut, tighten packing compression bolt to torque rating of 13 lbs/ft (18 Nm) minimum to 18 lbs/ft (25 Nm) maximum and re-tighten locknut.

5 REPAIRS

- The design of these valves allows packing or whole stem assembly to be replaced without removing the valve from the system but the system must be closed down and any residual pressure exhausted in a controlled manner before proceeding.
- To replace packing: - Remove handle, slacken locknut, remove compression bolt and compression gland ring. Remove packing and replace. Re-assemble in reverse order to the above and tighten to torque described in Paragraph 4.
- To replace whole stem assembly:- Remove handle and bonnet locking pin. Remove whole head assembly (N.B. To loosen - turn anti-clockwise). Slacken locknut, remove compression bolt and compression gland ring. Remove stem assembly by withdrawing downwards. Fit new stem assembly and packing. Re-assemble in reverse order to the above and tighten compression bolt to torque described in Paragraph 4. Re-fit head assembly to valve body and tighten to torque of 100 lbs/ft (135.58Nm) Replace locking pin. Test valve for leaks.
Note: Ensure stem is screwed fully into the bonnet before refitting to body. Fit locking pin, after testing.
- If the valve seat is damaged, the whole valve should be replaced.

6 SPARES

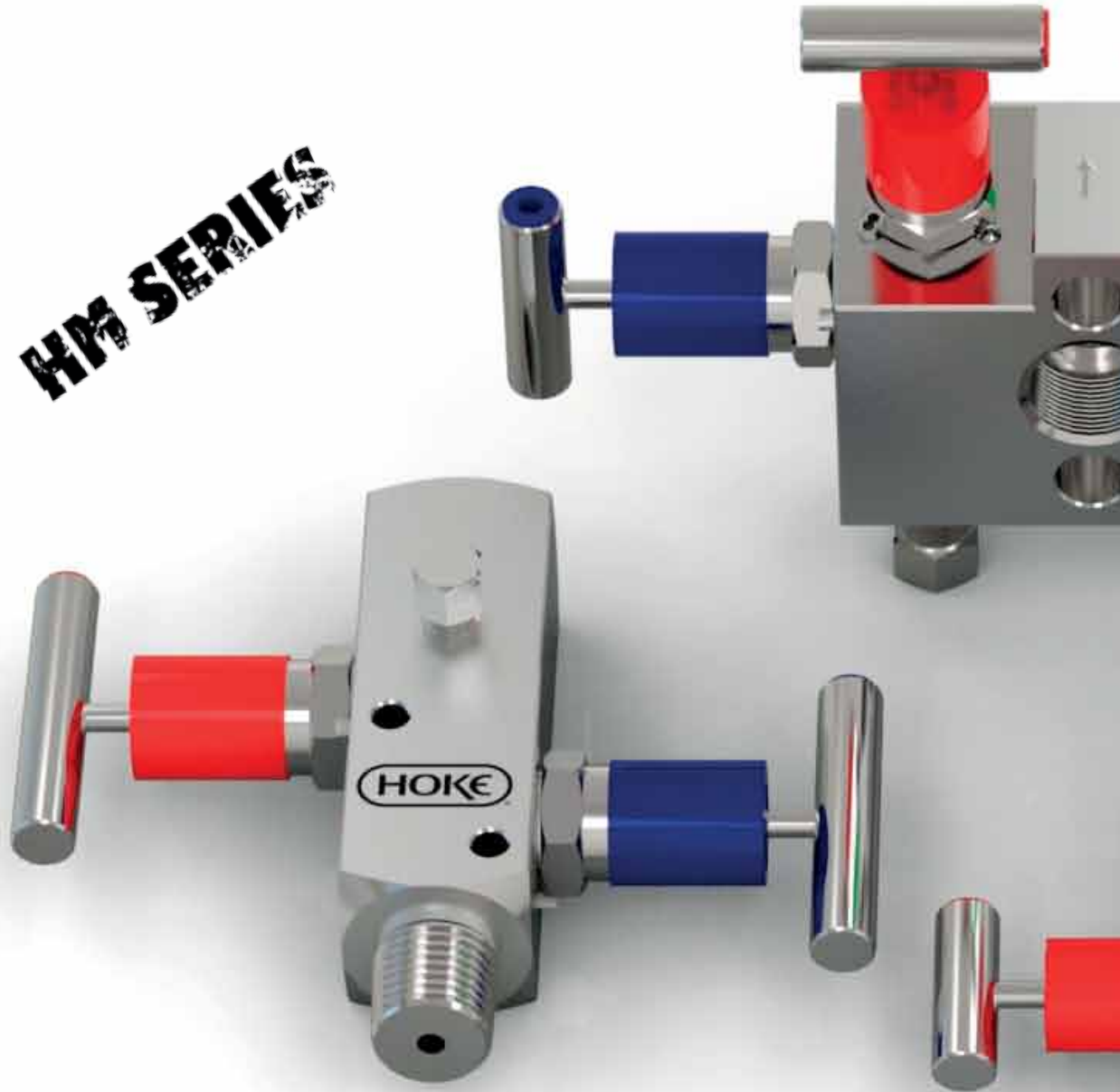
- We recommend that spares should be held in the form of whole stem assemblies.

Note: *It is the responsibility of the customer to select the proper valve.
If in any doubt, consult HOKE®*

Hand Valves, Gauge Valves, & Manifolds



HM SERIES



HOKE, Inc
PO Box 4866
Spartanburg, SC 29305-4866
Phone: (864) 574-7966
Fax: (864) 587-5608

QA135-13A

www.hoke.com
sales-hoke@circor.com
79028ENG • 05/13 • APS3059

Scan For



More Info